

Figure EA10a. (A) Transmitted light microscope image and (B+C) Raman maps for sample Mi1. Areas shown in green in (B) correspond to zones containing aragonite. Areas shown in red in (C) correspond to zones containing calcite. The very slight red coloration within the coral septum is background fluorescence. XRD analyses confirm that there is no calcite in this specimen.

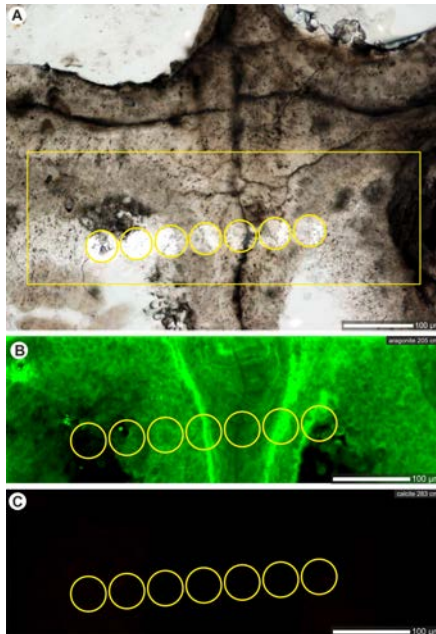


Figure EA10b. (A) Transmitted light microscope image and (B+C) Raman maps for sample Mi2. Areas shown in green in (B) correspond to zones containing aragonite. Areas shown in red in (C) correspond to zones containing calcite. The very slight red coloration within the coral septum is background fluorescence. XRD analyses confirm that there is no calcite in this specimen.

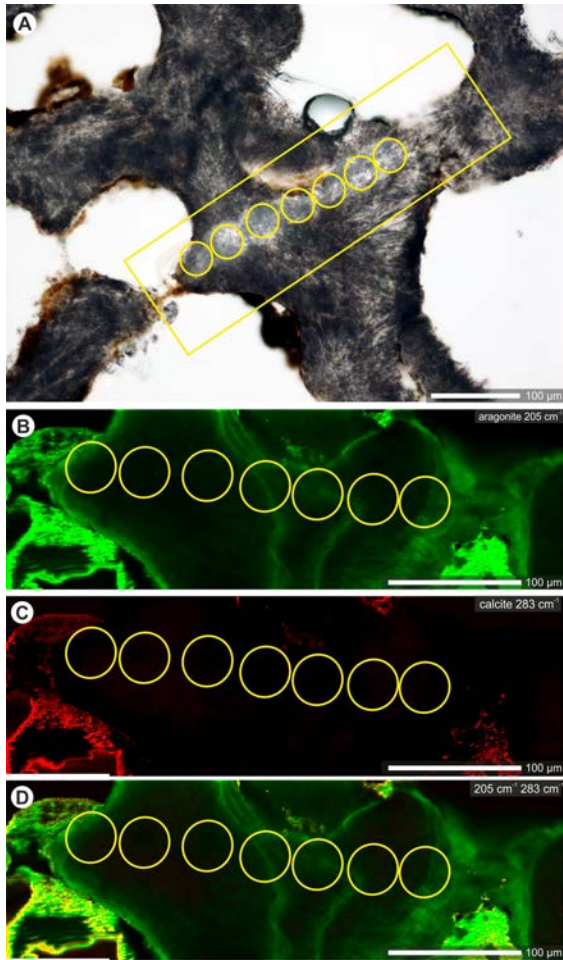


Figure EA10c. (A) Transmitted light microscope image and (B-D) Raman maps for sample Mi3. Areas shown in green in (B) correspond to zones containing aragonite. Areas shown in red in (C) correspond to zones containing calcite. (D) Combined map of B and C. Results show the absence of calcite within the coral skeleton.