

Figure EA12a. (A) Transmitted light microscope image, (B) reflected light image and (C, D) Raman maps, for sample J3. Areas shown in green in (C) correspond to zones containing aragonite. Areas shown in red in (D) correspond to zones containing calcite whereas black indicates the absence of calcite.

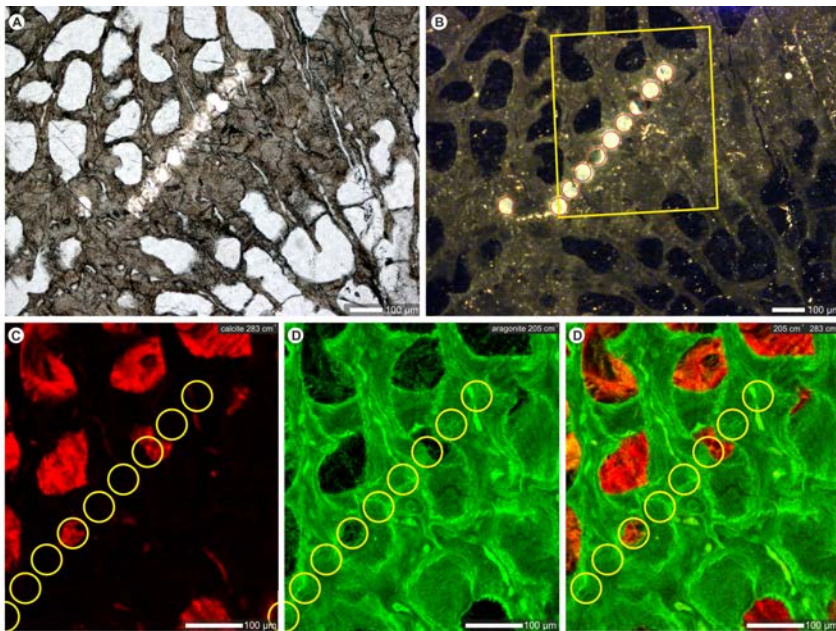


Figure EA12b. (A) Transmitted light microscope image, (B) reflected light image and (C-E) Raman maps, for sample Tr3. Areas shown in green in (D) correspond to zones containing aragonite. Areas shown in red in (C) correspond to zones containing calcite whereas black indicates the absence of calcite. (E) Combined map of C and D.

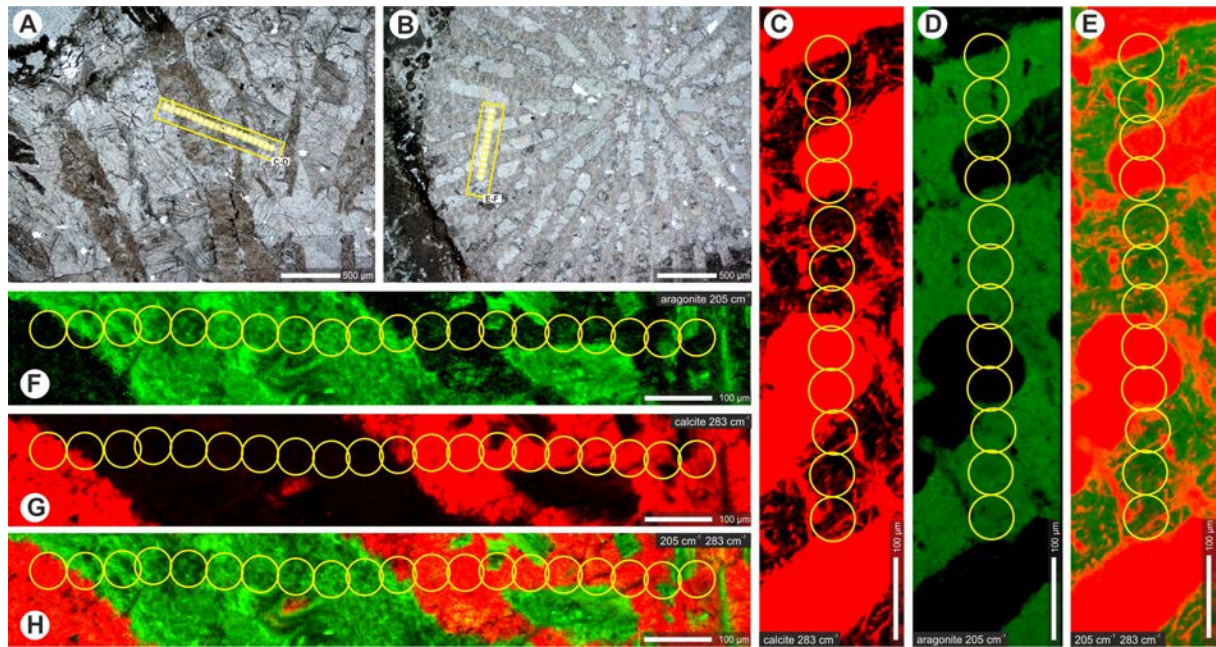


Figure EA12c. (A, B) Transmitted light microscope images and (C-H) Raman maps, for samples Tr4 and Tr5. Areas shown in green in (D, E, F, and H) correspond to zones containing aragonite. Areas shown in red in (C, E, G, and H) correspond to zones containing calcite whereas black indicates the absence of calcite. (E, H) Combined map of C and D for the two transects shown in A and B. The transect of points shown in C-E indicates poorer preservation relative to the transect shown in F-H.