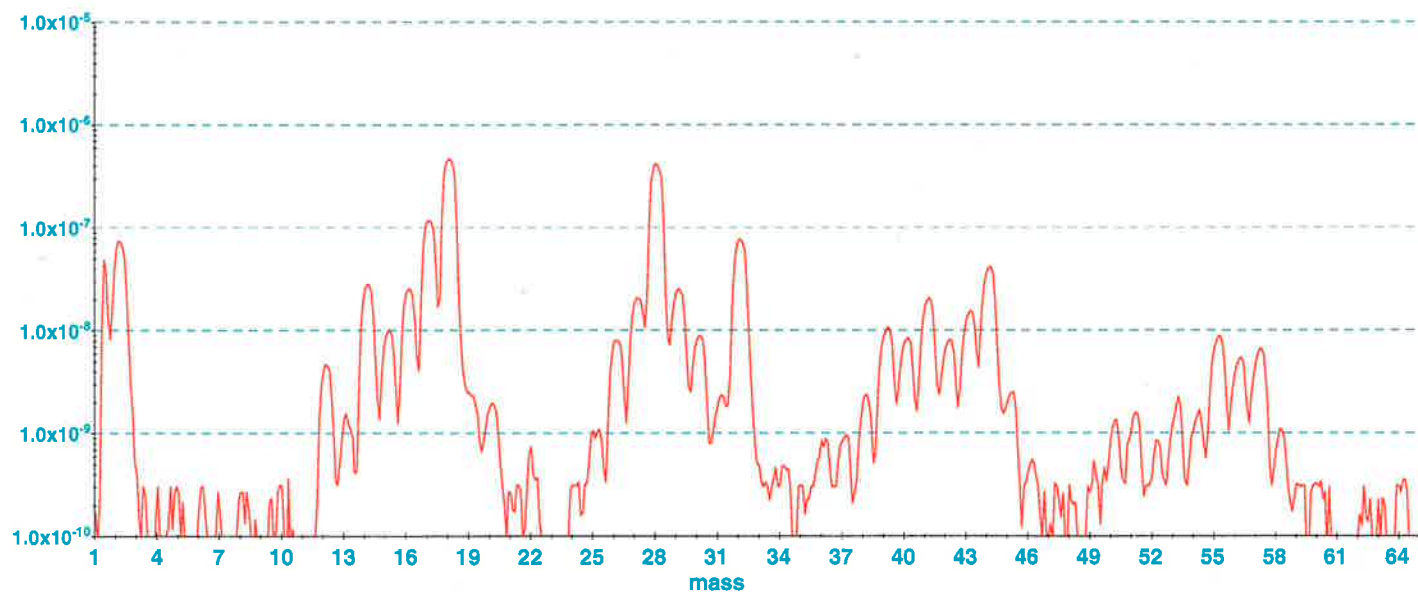
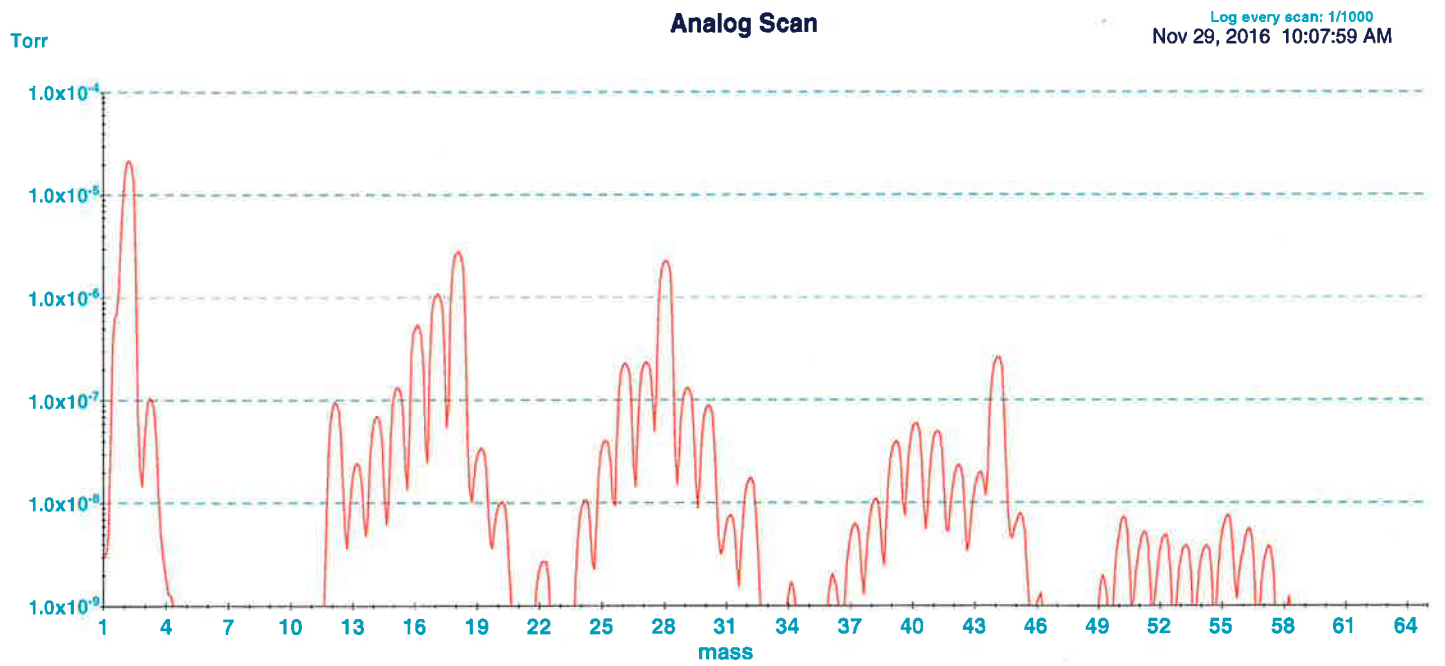


Torr

Analog Scan

Log every scan: 8/1000
Nov 29, 2016 09:06:51 AM

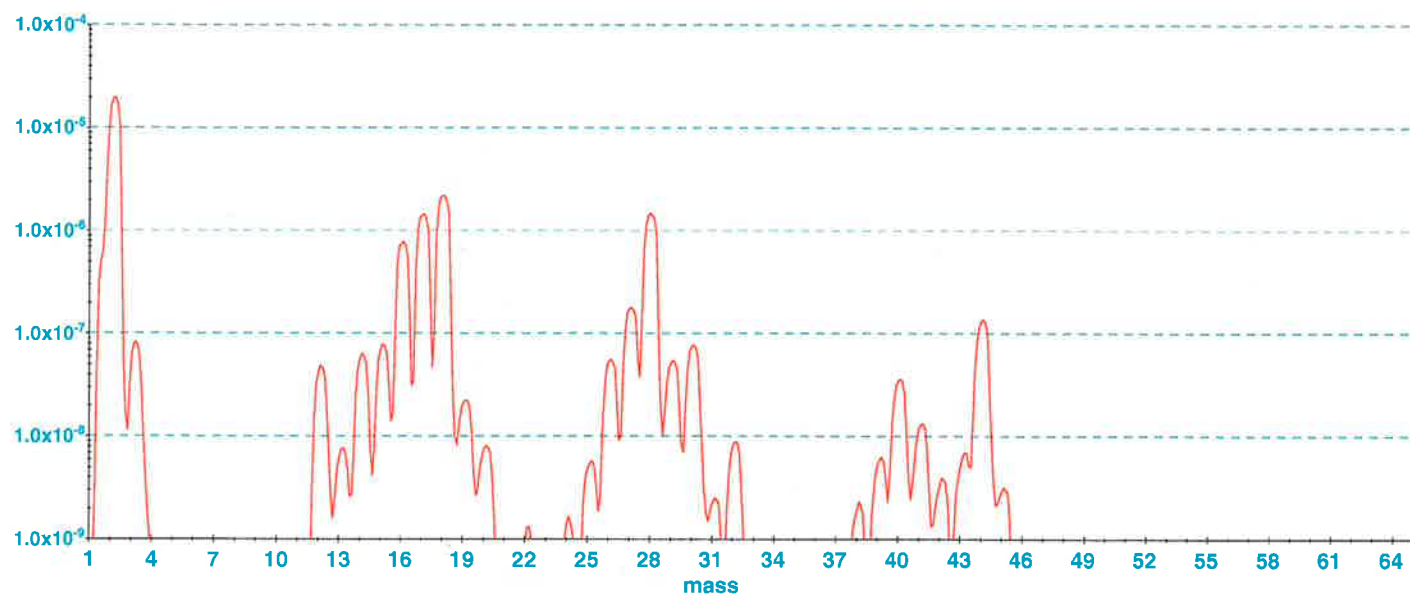




Analog Scan

Log every scan: 62/1000
Nov 29, 2016 10:34:20 AM

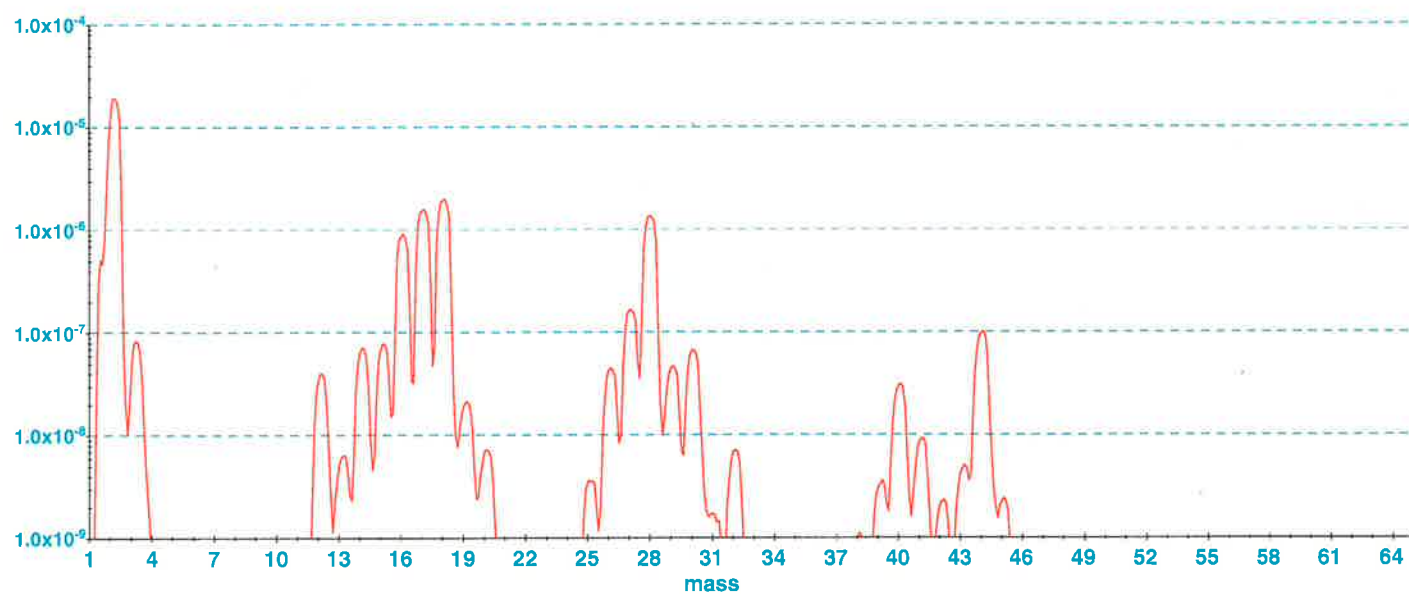
Torr



Analog Scan

Log every scan: 138/1000
Nov 29, 2016 11:03:57 AM

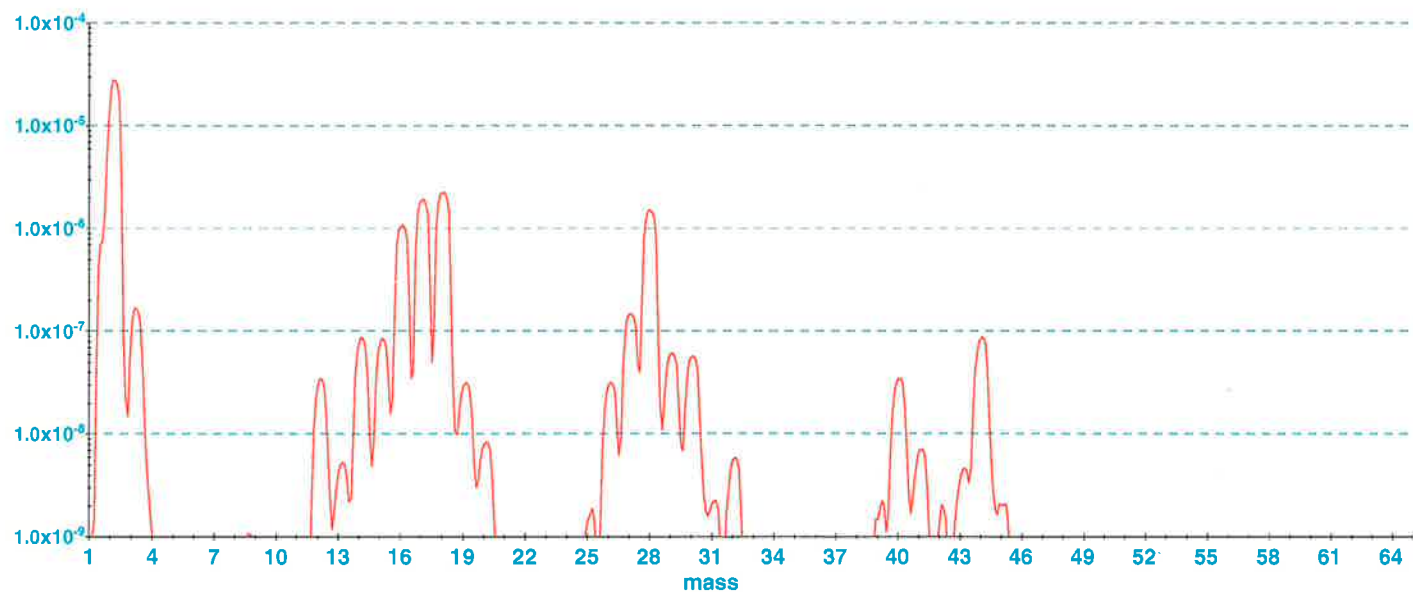
Torr



Analog Scan

Log every scan: 57/1000
Nov 29, 2016 11:13:05 AM

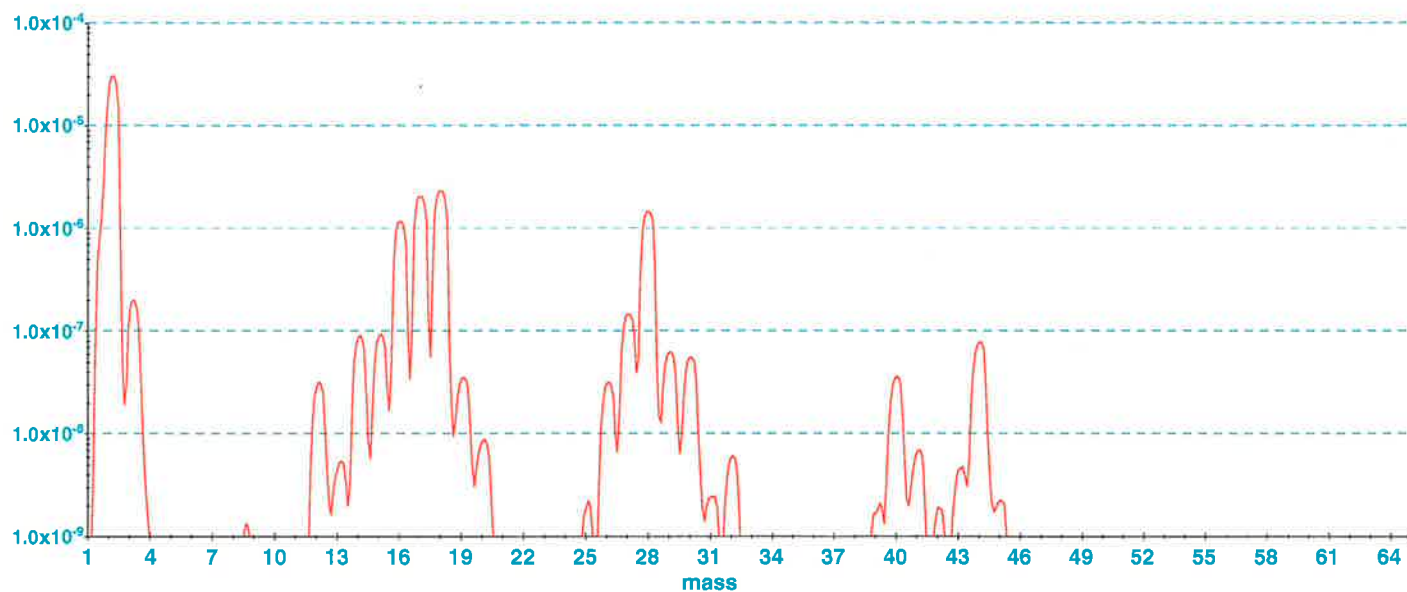
Torr



Torr

Analog Scan

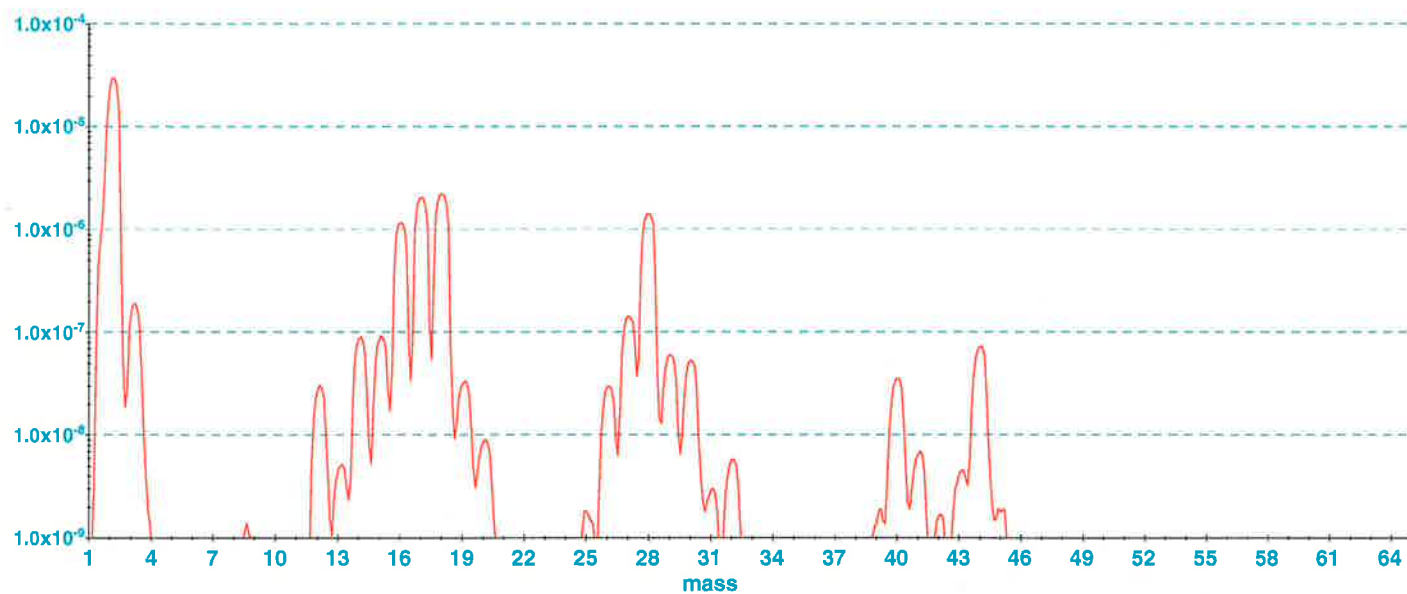
Log every scan: 61/1000
Nov 29, 2016 11:24:48 AM



Torr

Analog Scan

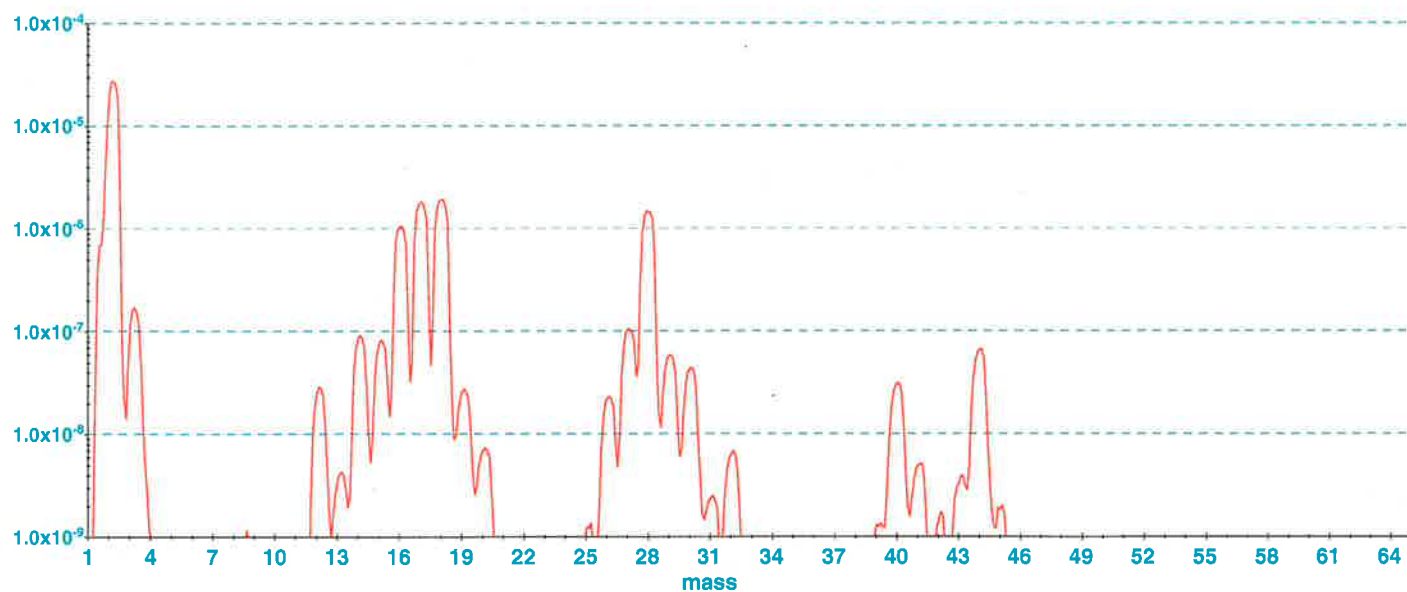
Log every scan: 81/1000
Nov 29, 2016 11:37:46 AM



Analog Scan

Log every scan: 127/1000
Nov 29, 2016 12:08:45 PM

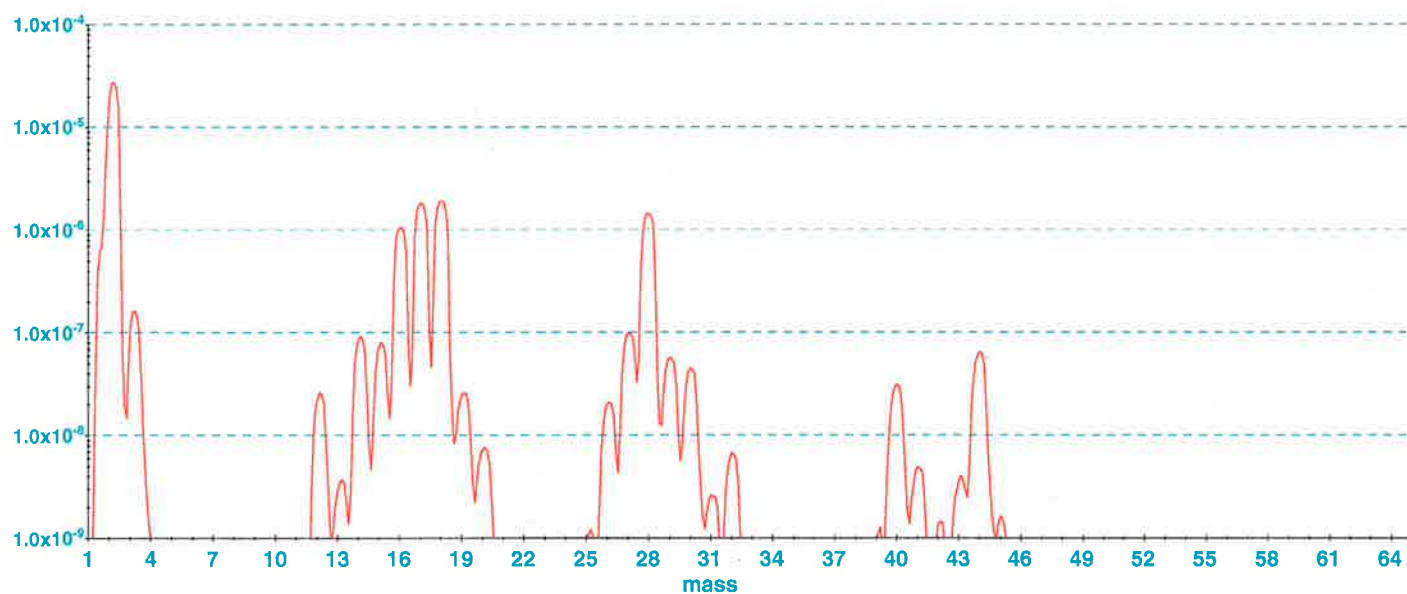
Torr



Analog Scan

Log every scan: 104/1000
Nov 29, 2016 12:26:11 PM

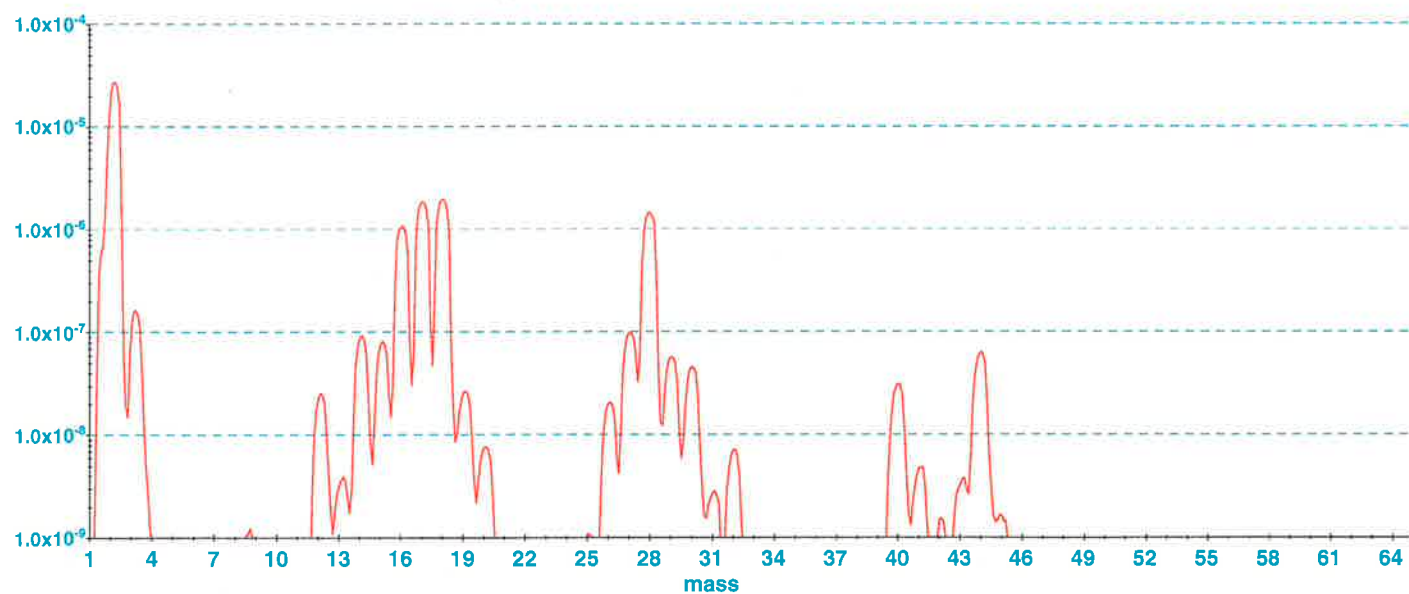
Torr

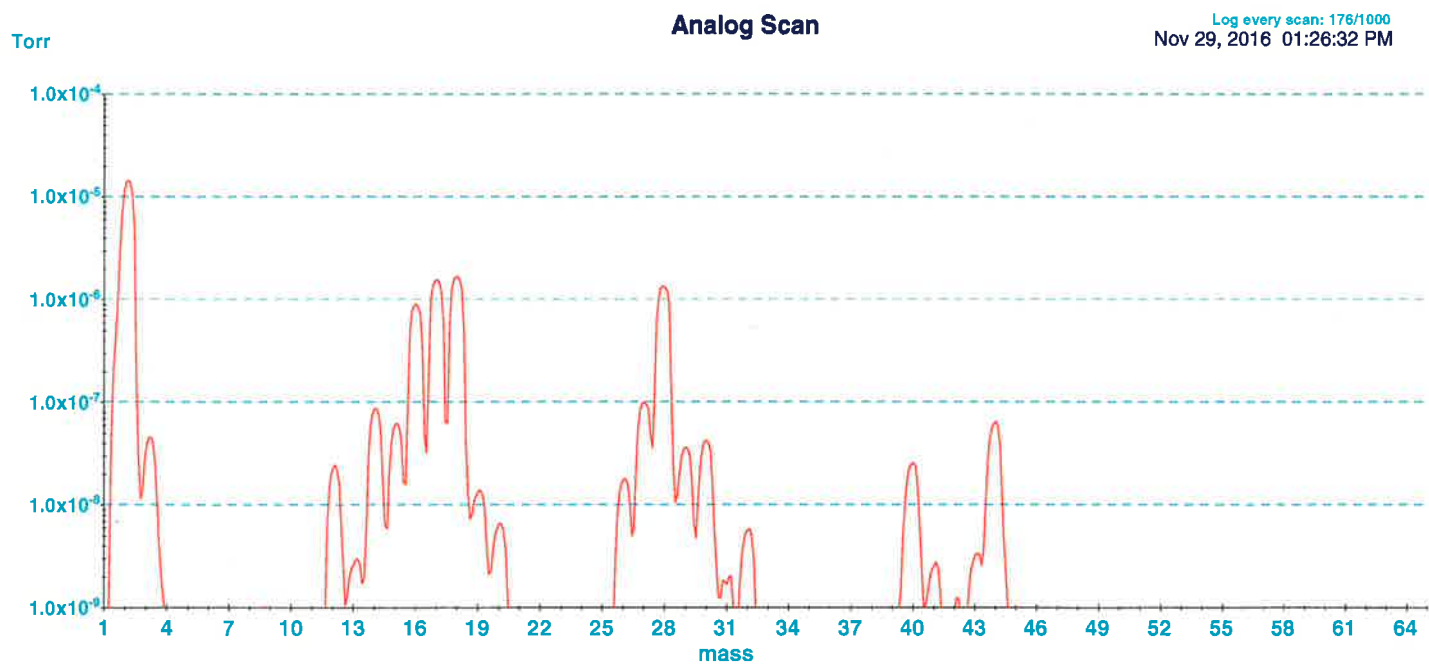


Analog Scan

Log every scan: 54/1000
Nov 29, 2016 12:37:03 PM

Torr

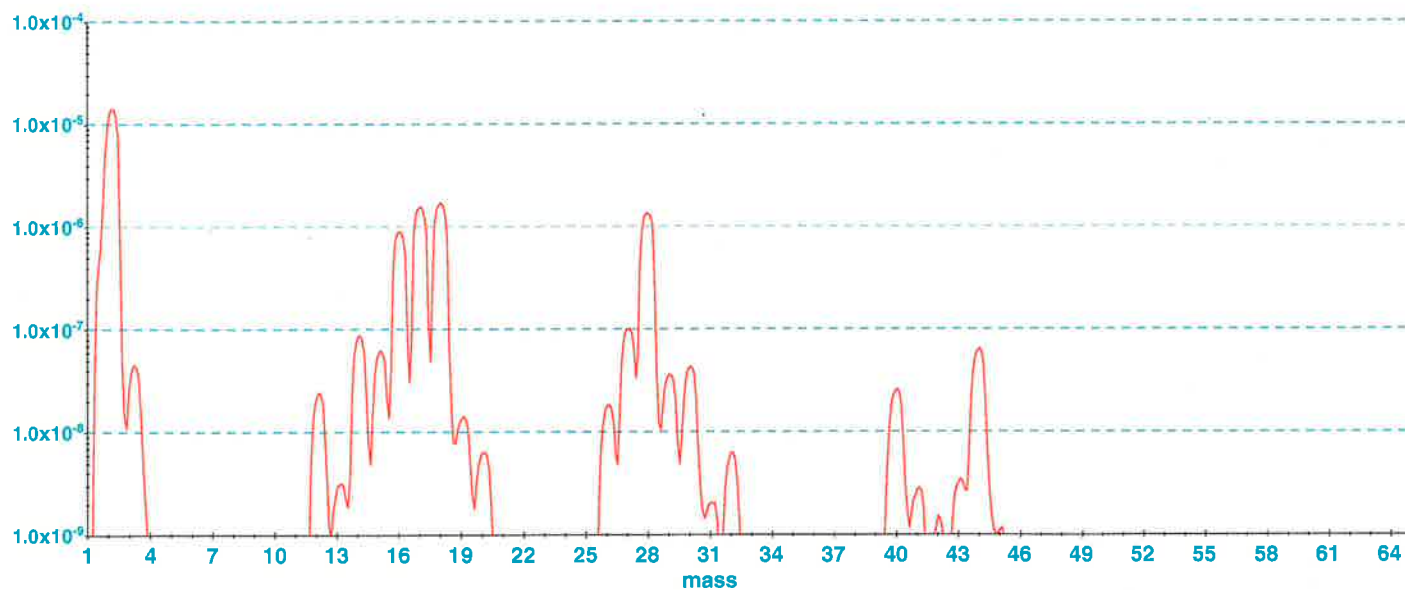




Analog Scan

Log every scan: 51/1000
Nov 29, 2016 01:34:43 PM

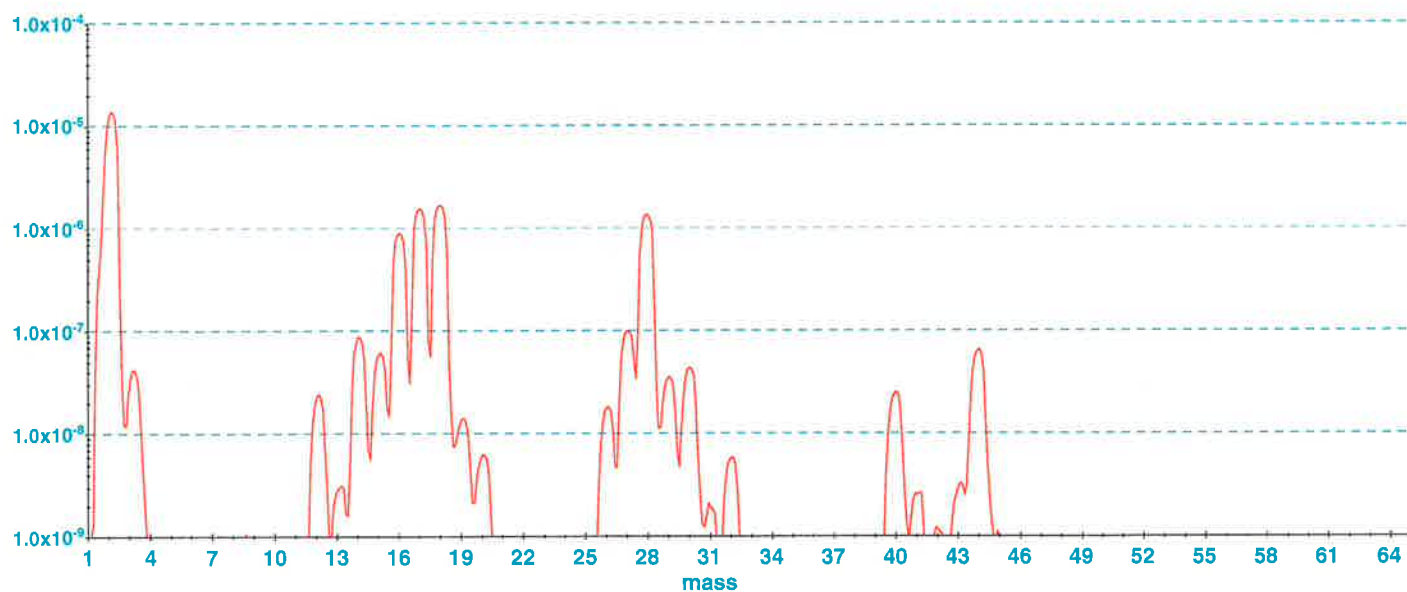
Torr



Analog Scan

Log every scan: 125/1000
Nov 29, 2016 01:54:43 PM

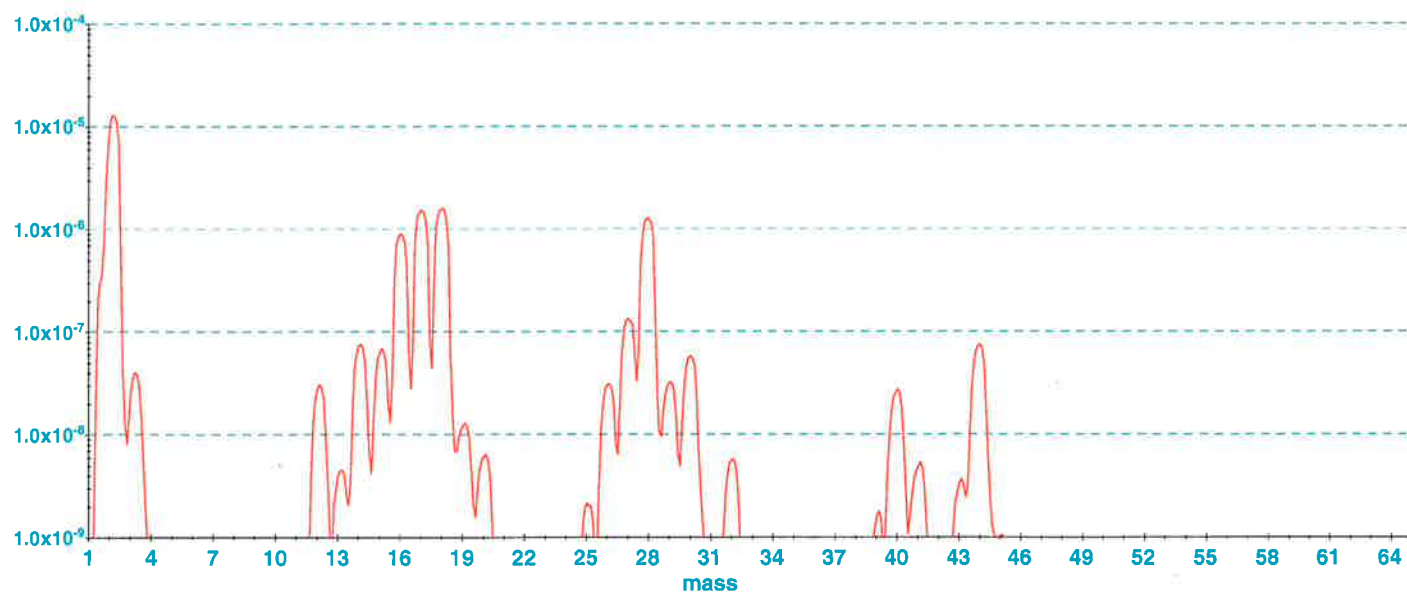
Torr



Analog Scan

Log every scan: 206/1000
Nov 29, 2016 02:32:45 PM

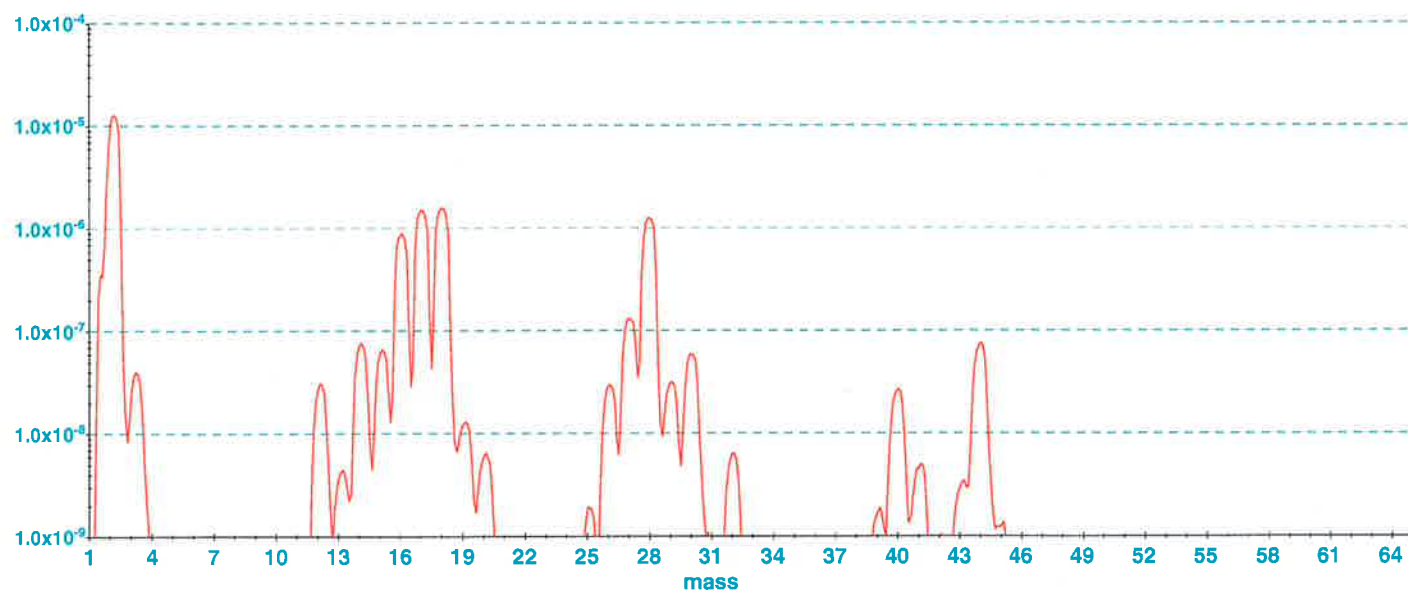
Torr



Torr

Analog Scan

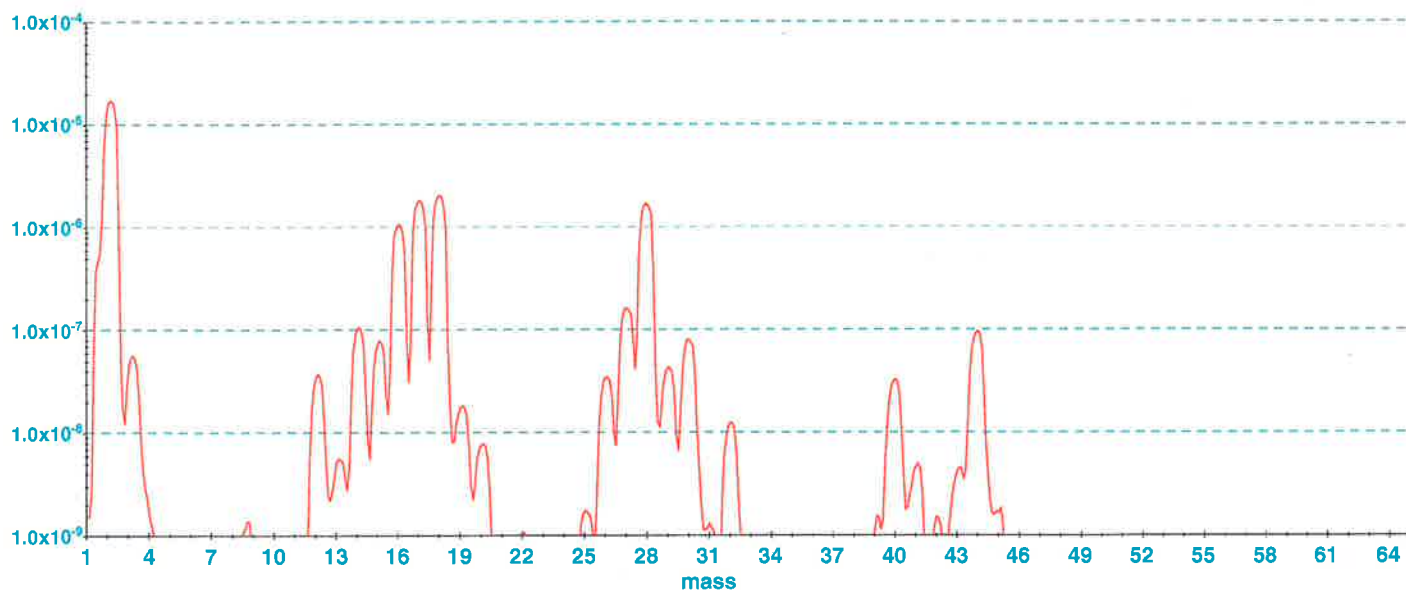
Log every scan: 97/1000
Nov 29, 2016 02:48:21 PM



Analog Scan

Log every scan: 232/1000
Nov 29, 2016 03:25:18 PM

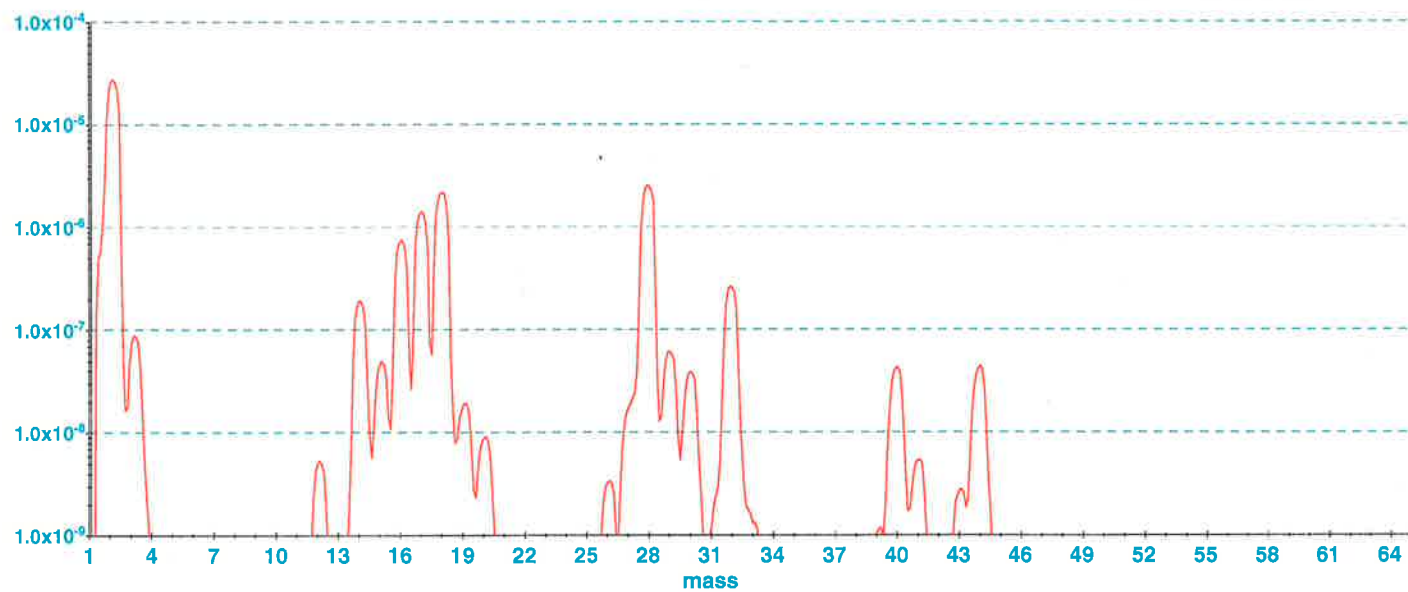
Torr

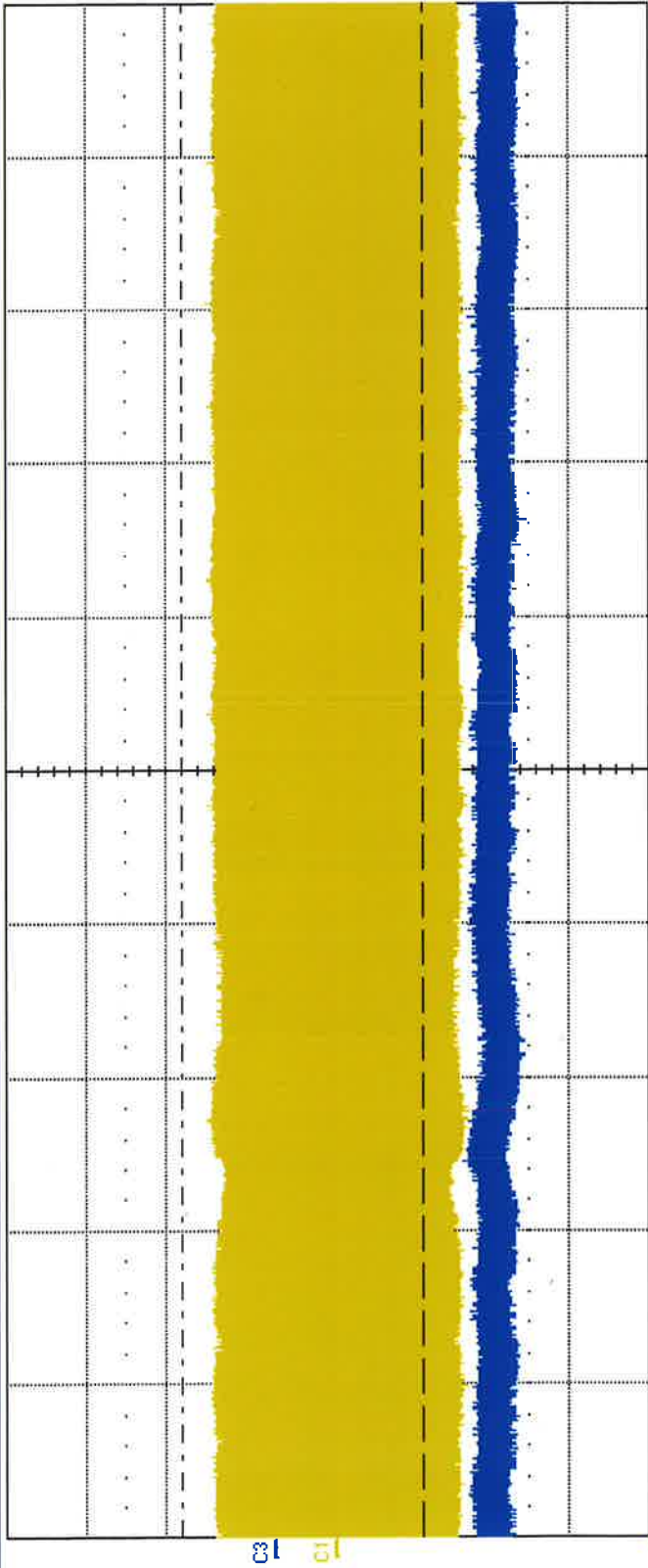


Torr

Analog Scan

Log every scan: 160/1000
Nov 29, 2016 04:00:05 PM
X = 1.1 Y = -2.42e-009





| Measure | | P1: pkpk(C1) | P2: ampl(C1) | P3: ampl(C3) | P4: pkpk(C3) | P5: mean(C3) | P6: --- |
|---------|--|--------------|--------------|--------------|--------------|--------------|---------|
| value | | 3.22 V | 2.700 V | 375 V | 375 V | -1.355 kV | |
| mean | | 3.1557 V | 2.7343 V | 338.8 V | 338.8 V | -1.34602 kV | |
| min | | 2.97 V | 2.54 V | 297 V | 297 V | -1.374 kV | |
| max | | 3.28 V | 2.80 V | 391 V | 391 V | -1.268 kV | |
| sdev | | 54.0 mV | 54.8 mV | 19.7 V | 19.7 V | 18.96 V | |
| num | | 60 | 60 | 60 | 60 | 60 | |
| status | | ✓ | ✓ | ⚠ | ✓ | ✓ | |

C1

DCIM

1.00 V/div

-110 mV ofst

1.92 V

-1.06 V

Δy

-2.98 V

C3

DCIM

500 V/div

320 V ofst

585 V

-905 V

Δy

-1.480 kV

Trigger

Auto

Edge

Positive

Tbase

-1.5400 ms

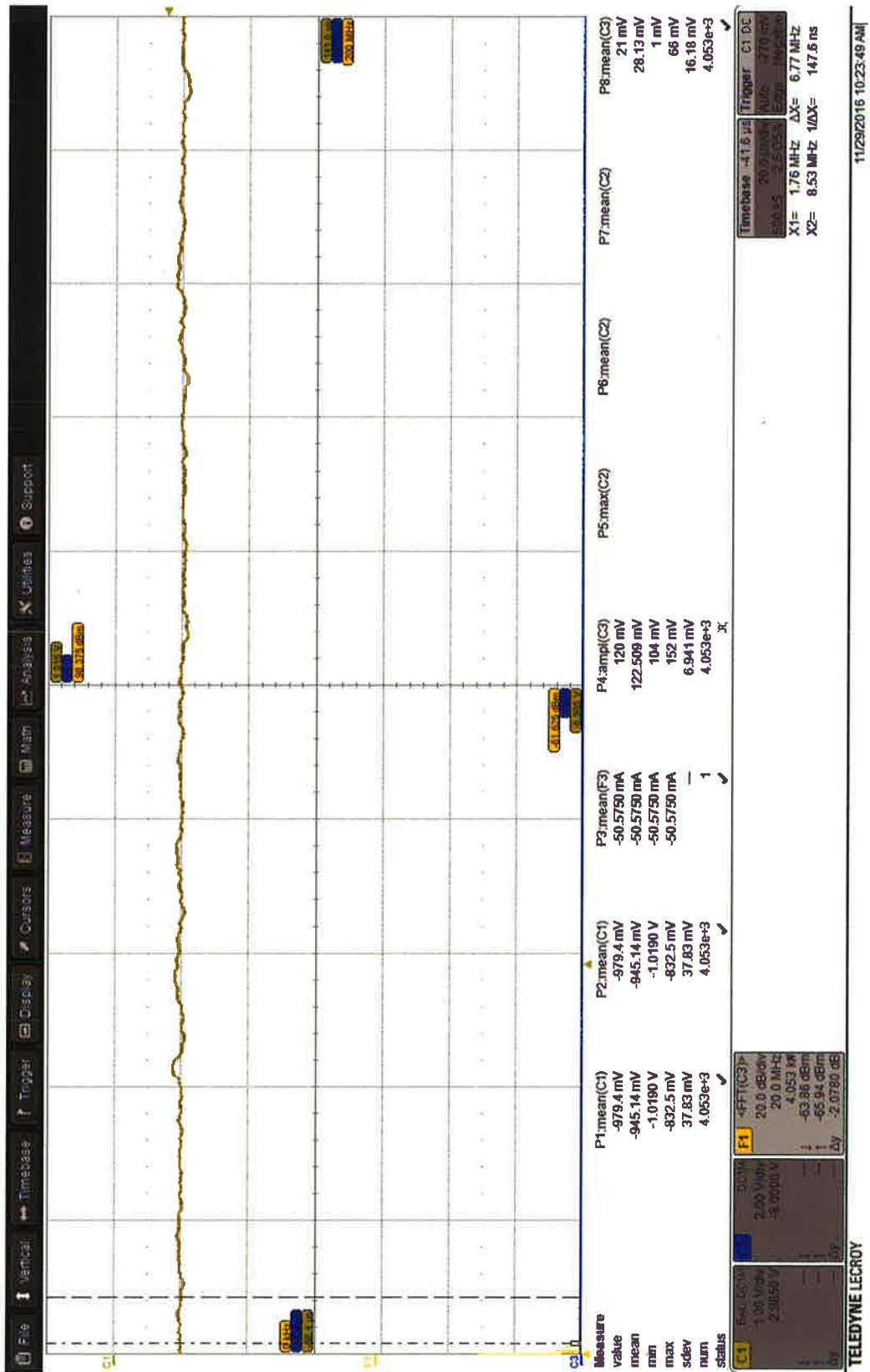
10.0 μs/div

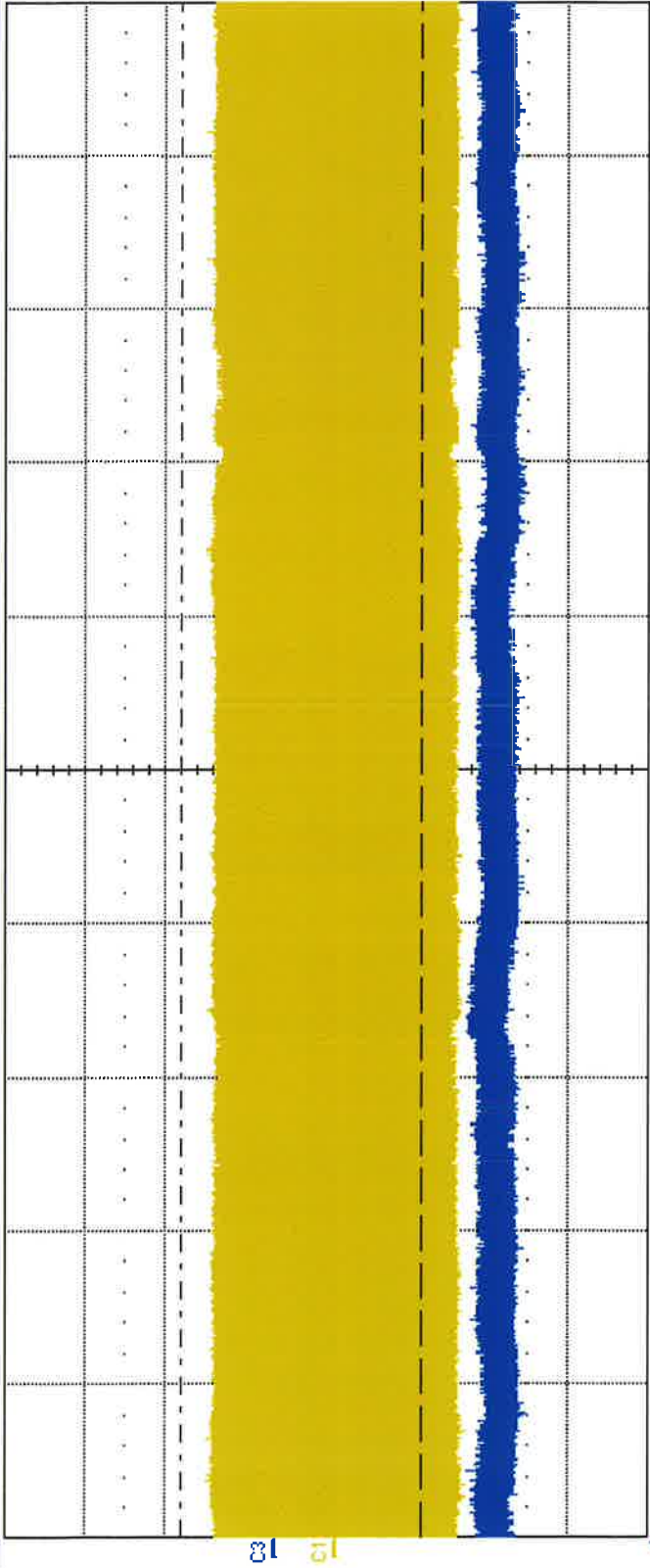
200 μs

2.0 GS/s

C4: DC

3.10 V





| Measure | P1:pkpk(C1) | P2:ampl(C1) | P3:ampl(C3) | P4:pkpk(C3) | P5:mean(C3) | P6:--- |
|---------|-------------|-------------|-------------|-------------|-------------|--------|
| value | 3.22 V | 2.846 V | 359 V | 359 V | -1.384 kV | |
| mean | 3.1771 V | 2.7987 V | 327.8 V | 327.8 V | -1.37378 kV | |
| min | 3.09 V | 2.67 V | 281 V | 281 V | -1.404 kV | |
| max | 3.31 V | 2.89 V | 391 V | 391 V | -1.334 kV | |
| sdev | 40.4 mV | 37.1 mV | 21.9 V | 21.9 V | 13.04 V | |
| num | 102 | 102 | 102 | 102 | 102 | |
| status | ✓ | ✓ | ✓ | ✓ | ✓ | |

C1

DCIM

1.00 V/div

-110 mV offset

1.92 V

-1.06 V

-2.98 V

Δy

C3

DCIM

500 V/div

320 V offset

585 V

-905 V

-1.450 kV

Δy

Tbase

200 ns

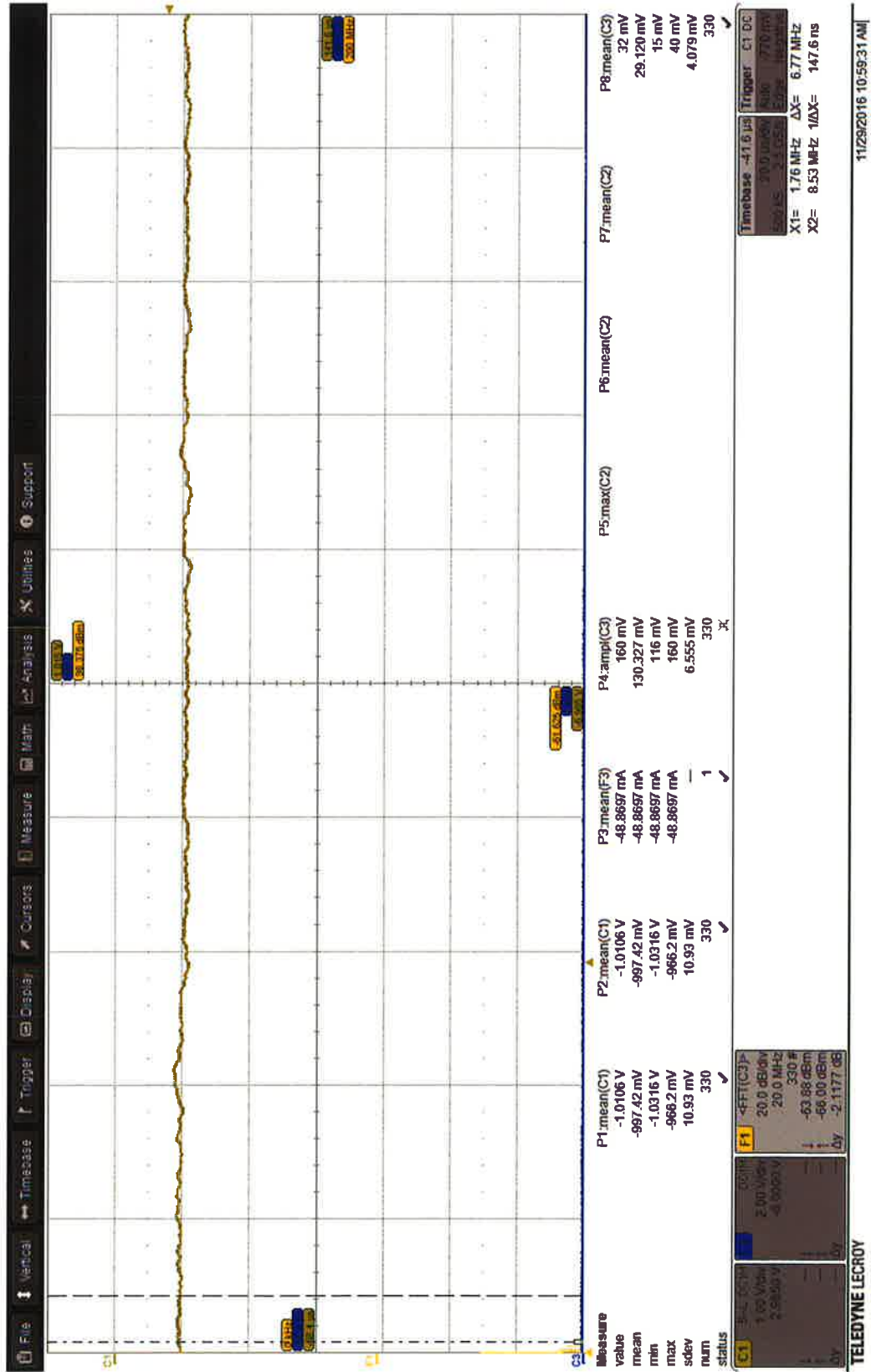
Trigger

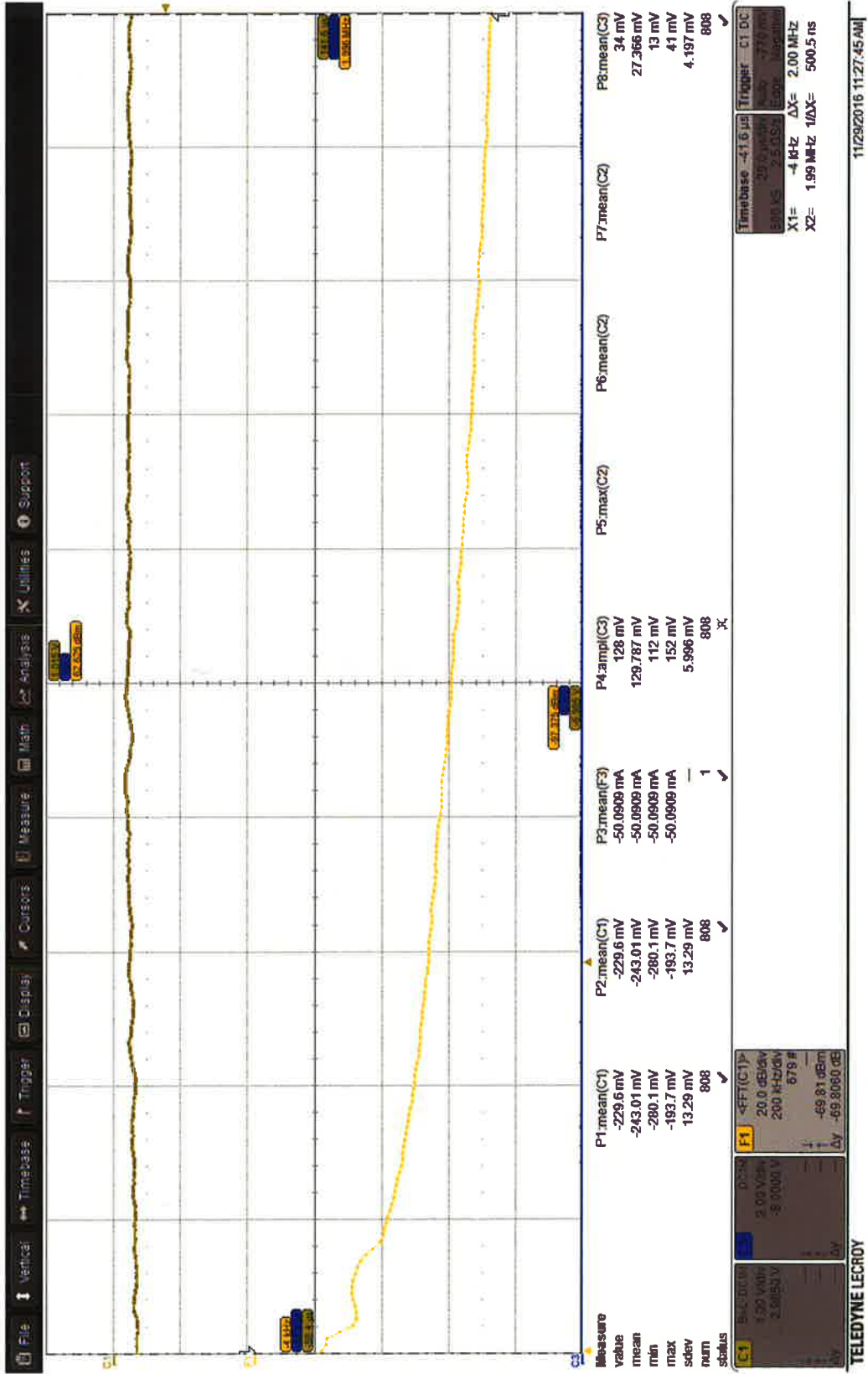
Auto

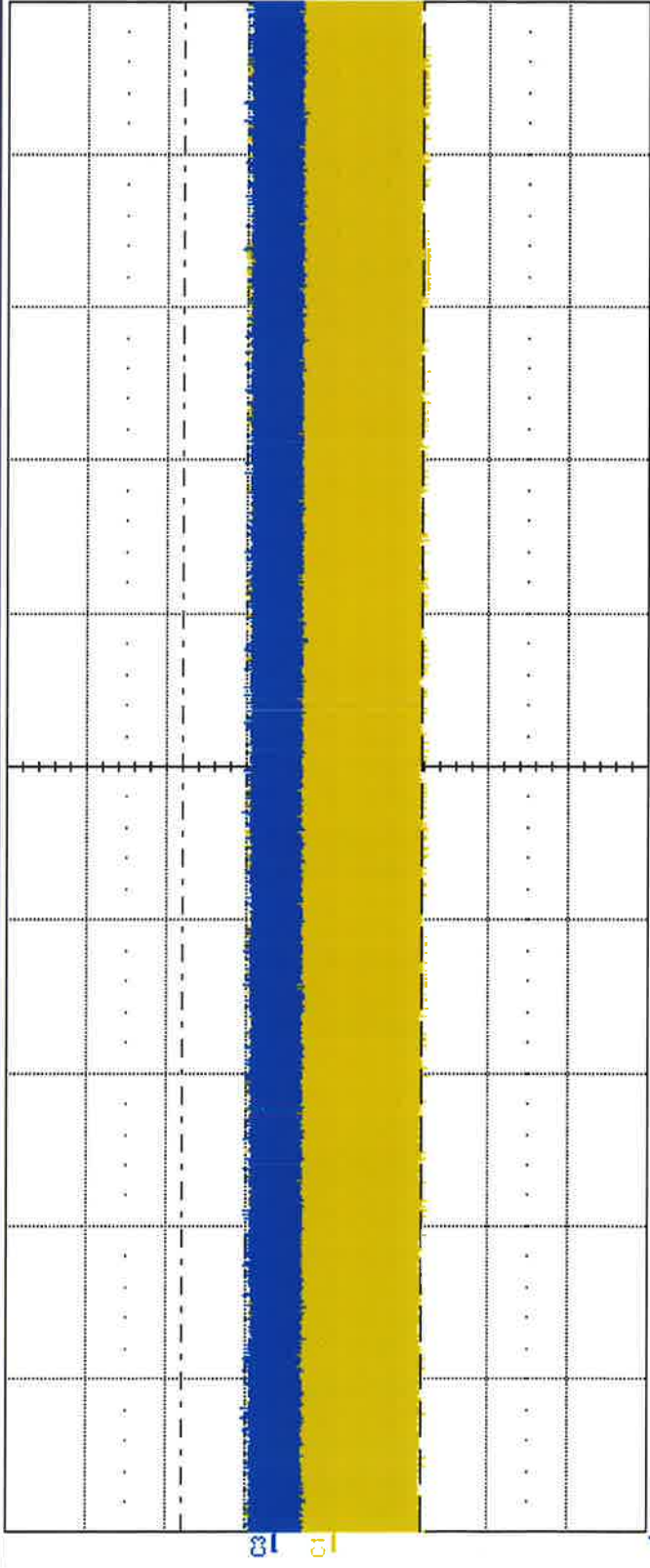
C4:DC

3.10 V

Positive





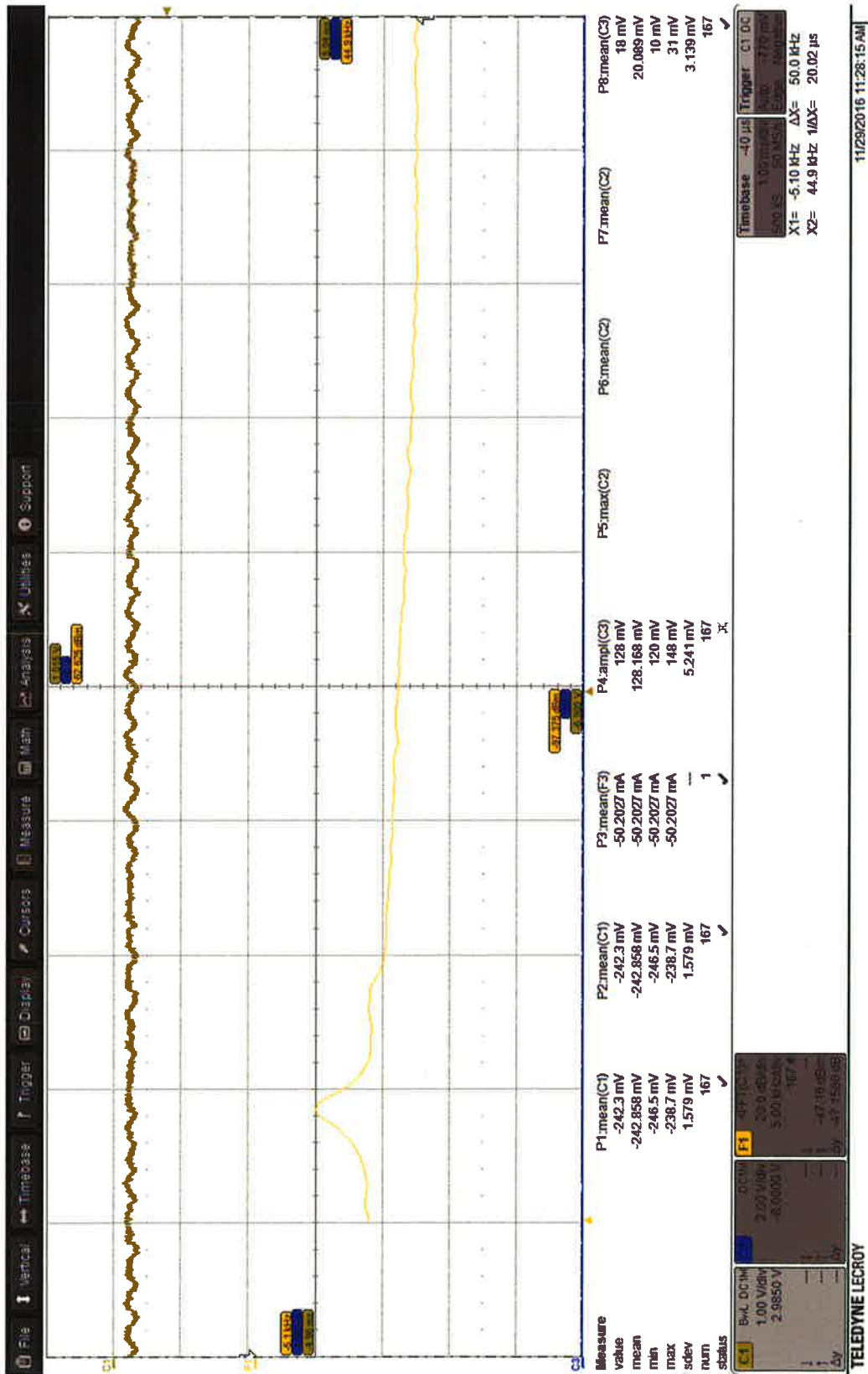


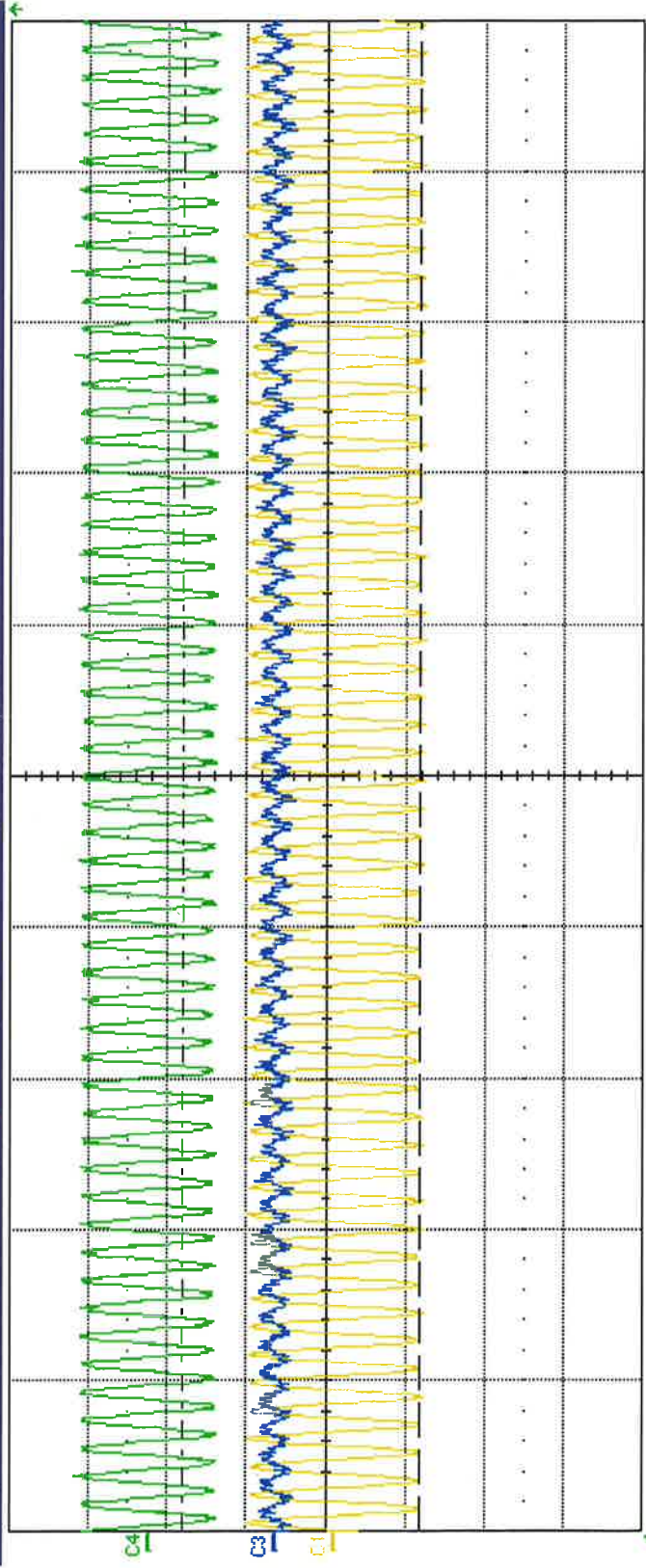
| Measure | P1:pkpk(C1) | P2:amp(C1) | P3:amp(C3) | P4:pkpk(C3) | P5:mean(C3) | P6:--- |
|---------|-------------|------------|------------|-------------|-------------|--------|
| value | 2.25 V | 1.877 V | 391 V | 391 V | -2 V | |
| mean | 2.2761 V | 1.9086 V | 402.5 V | 402.5 V | -1.92 V | |
| min | 2.22 V | 1.85 V | 375 V | 375 V | -9 V | |
| max | 2.38 V | 1.94 V | 469 V | 469 V | 1 V | |
| sdev | 32.2 mV | 19.7 mV | 16.4 V | 16.4 V | 1.96 V | |
| num | 67 | 67 | 67 | 67 | 67 | |
| status | ✓ | ✓ | 5 | ✓ | ✓ | |

C1
DCIM
1.00 V/div
-110 mV offset
1.92 V
-1.06 V
-2.98 V
Δy

C3
0.500
500 V/div
320 V offset
585 V
-905 V
-1.450 kV
Δy

Tbase
-1.5400 ms
Trigger
C4 DC
200 kS
10.0 μs/div
Auto
3.10 V
2.0 GS/s
Edge
Positive





| Measure | P1:pkpk(C1) | P2:amp(C1) | P3:amp(C3) | P4:pkpk(C3) | P5:mean(C3) | P6:--- |
|---------|-------------|------------|------------|-------------|-------------|--------|
| value | 2.31 V | 2.051 V | 234 V | 234 V | 2 V | |
| mean | 2.3895 V | 2.12806 V | 245.8 V | 249.2 V | 913 mV | |
| min | 2.25 V | 2.010 V | 94 V | 219 V | -5 V | |
| max | 2.59 V | 2.310 V | 297 V | 297 V | 7 V | |
| sdev | 83.1 mV | 75.52 mV | 30.6 V | 19.2 V | 2.97 V | |
| num | 41 | 41 | 41 | 41 | 41 | |
| status | ✓ | ✓ | 5 | ✓ | ✓ | |

C1

DCIM

1.00 V/div

-110 mV ofst

1.92 V

-1.05 V

-2.98 V

ΔV

C3

DCIM

500 V/div

320 V ofst

585 V

-305 V

-1.490 kV

ΔV

C4

DCIM

500 mV/div

1.110 V ofst

-205 mV

-1.895 V

-1.490 V

ΔV

Thse

-1.540000 ms

200 ns/div

2.00 kS

Trigger

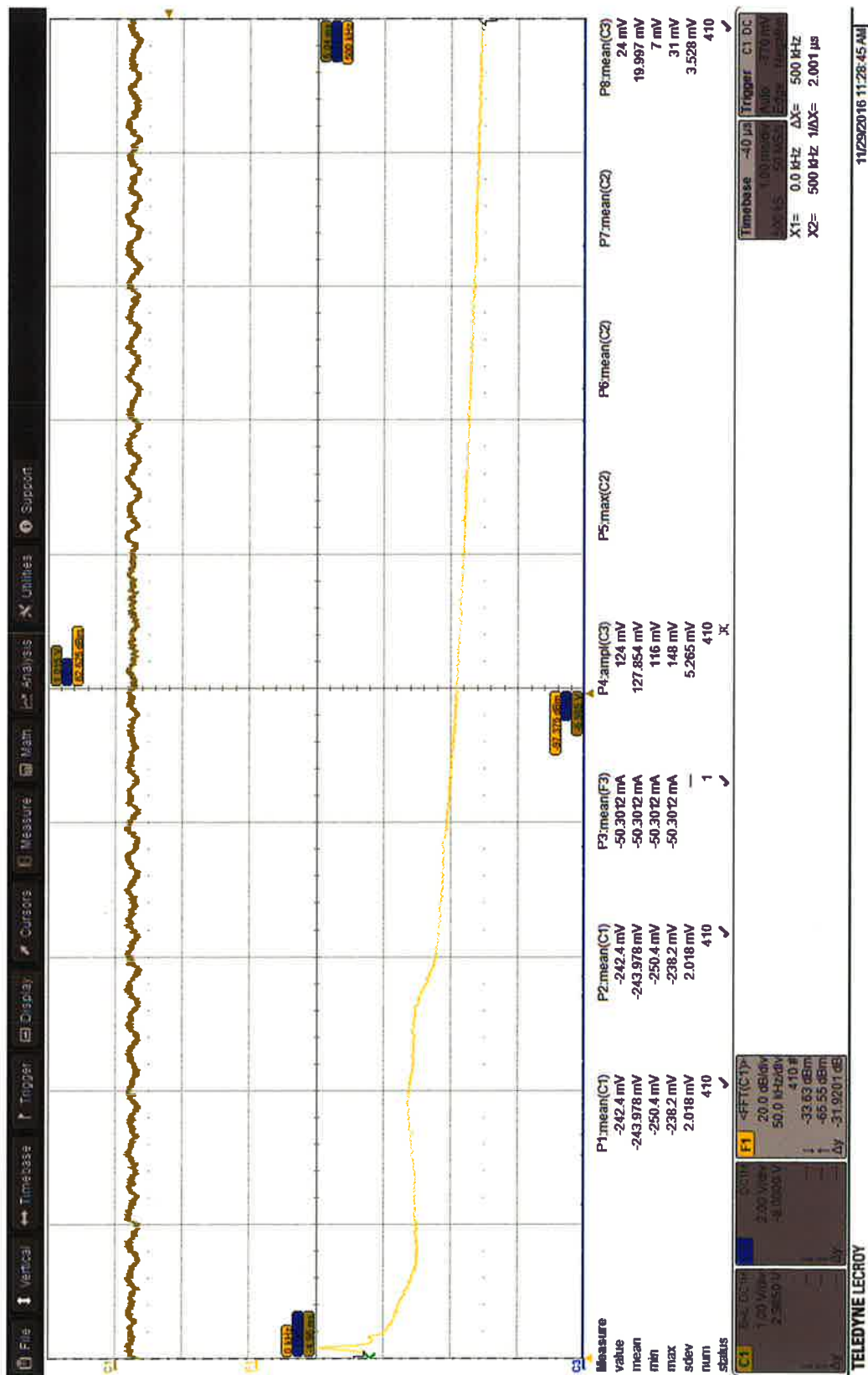
Auto

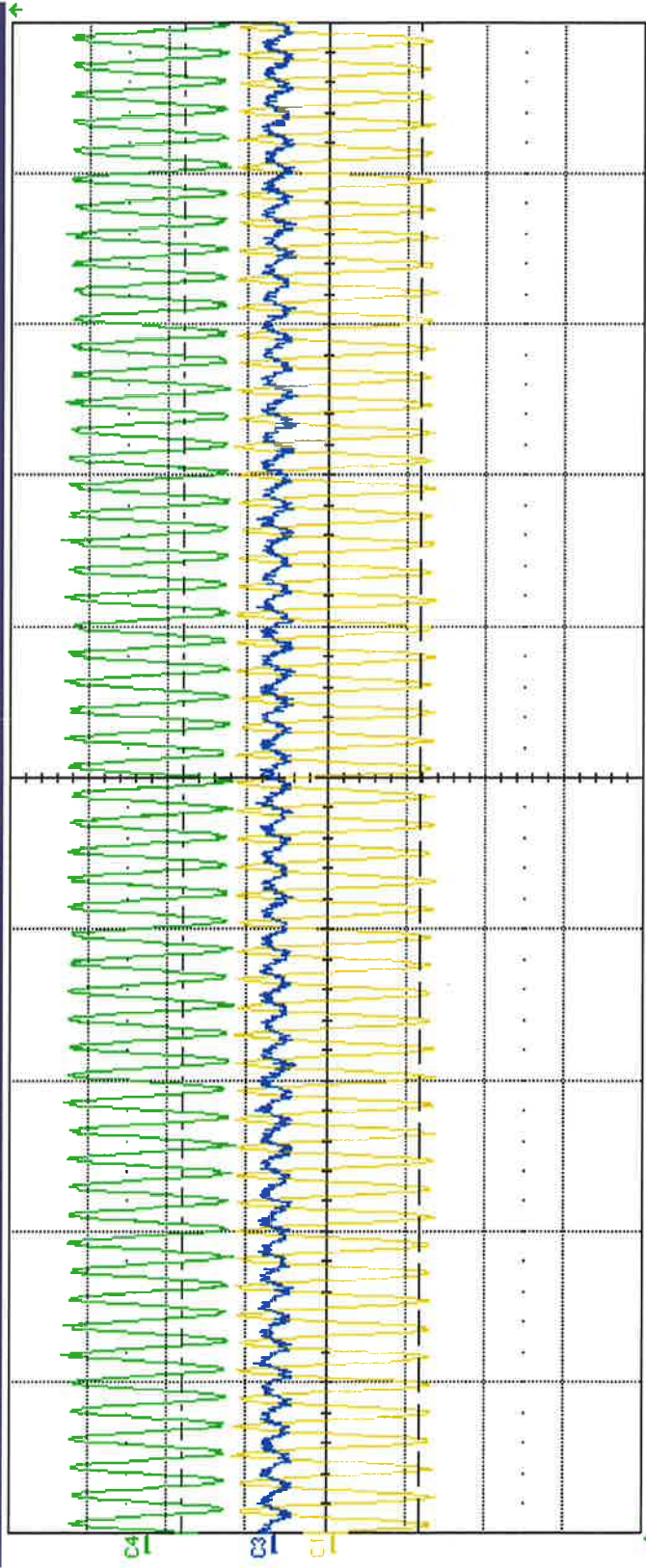
Edge

C4 DC

1.390 V

Positive





| Measure | | P1:pkpk(C1) | P2:ampl(C1) | P3:ampl(C3) | P4:pkpk(C3) | P5:mean(C3) | P6:--- |
|---------|--|-------------|-------------|-------------|-------------|-------------|--------|
| value | | 2.44 V | 2.173 V | 234 V | 234 V | 0 V | |
| mean | | 2.500 V | 2.24101 V | 233.3 V | 233.3 V | 2.00 V | |
| min | | 2.34 V | 1.985 V | 203 V | 203 V | -6 V | |
| max | | 2.75 V | 2.625 V | 266 V | 266 V | 11 V | |
| sdev | | 101.3 mV | 117.88 mV | 12.4 V | 12.4 V | 3.34 V | |
| num | | 60 | 60 | 60 | 60 | 60 | |
| status | | ✓ | ✓ | ✗ | ✓ | ✓ | |

C1

DCIM

1.00 V/div

-110 mV ofst

1.92 V

-1.06 V

-2.98 V

ΔV

C3

ACIM

500 V/div

320 V ofst

585 V

-805 V

-1.490 kV

ΔV

C4

DCIM

500 mV/div

1.110 V ofst

-205 mV

-1.695 V

-1.490 V

ΔV

Tbase

-1.540000 ms

200 ns/div

2.00 kS

Trigger

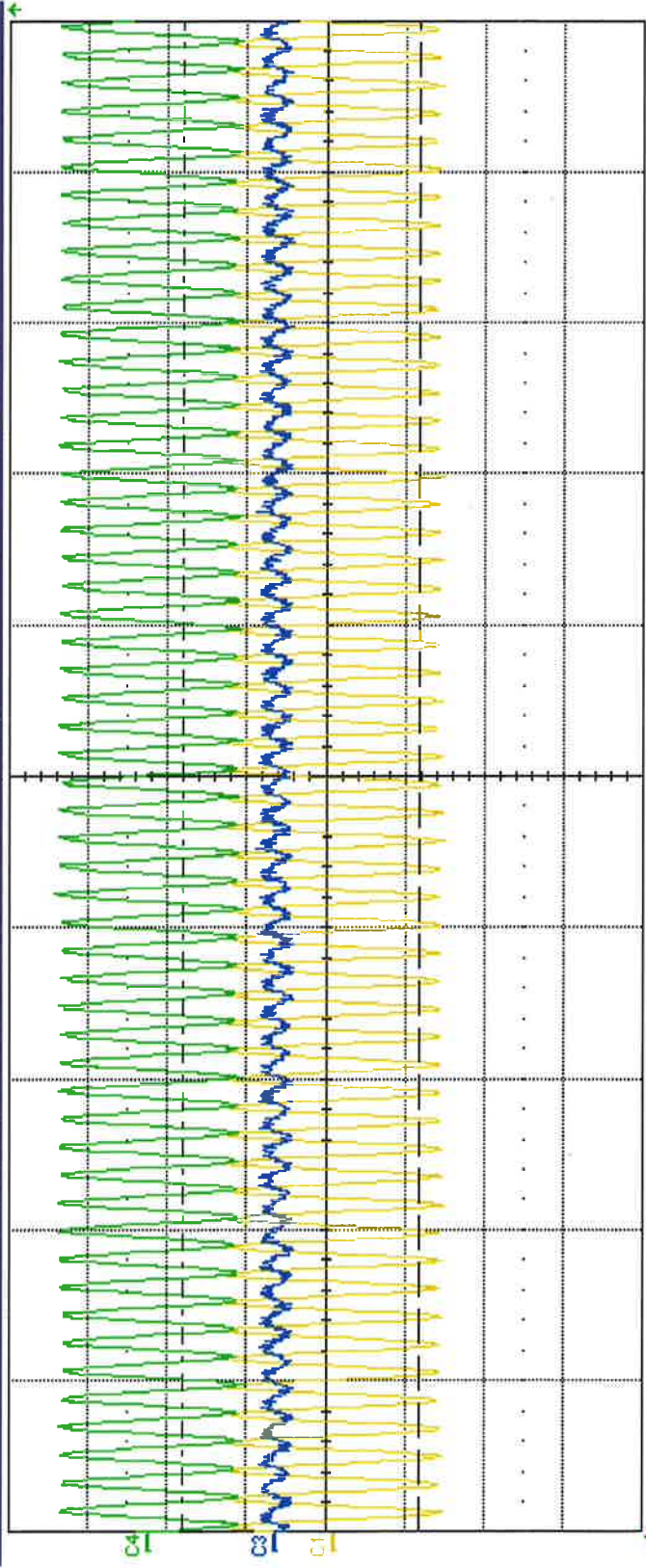
C4:DC

Auto

Edge

Positive





| Measure | | P1:pkpk(C1) | P2:ampl(C1) | P3:ampl(C3) | P4:pkpk(C3) | P5:mean(C3) | P6:--- |
|---------|--|-------------|-------------|-------------|-------------|-------------|--------|
| value | | 2.78 V | 2.525 V | 219 V | 219 V | 1 V | |
| mean | | 2.7619 V | 2.53160 V | 231.7 V | 238.5 V | 1.43 V | |
| min | | 2.72 V | 2.331 V | 87 V | 219 V | -5 V | |
| max | | 2.81 V | 2.781 V | 266 V | 266 V | 10 V | |
| sdev | | 25.5 mV | 88.67 mV | 33.9 V | 14.1 V | 3.70 V | |
| num | | 42 | 42 | 42 | 42 | 42 | |
| status | | ✓ | ✓ | ✗ | ✓ | ✓ | |

C1

DCIM

1.00 V/div

-110 mV offset

1.92 V

-1.06 V

-2.98 V

Δy

C3

DCIM

500 mV/div

320 V offset

585 V

-905 V

-1.490 kV

Δy

C4

DCIM

500 mV/div

1.110 V offset

-205 mV

-1.595 V

-1.490 V

Δy

Tbase

-1.540000 ms

200 ns/div

2.00 kS

1.0 GS/s

Trigger

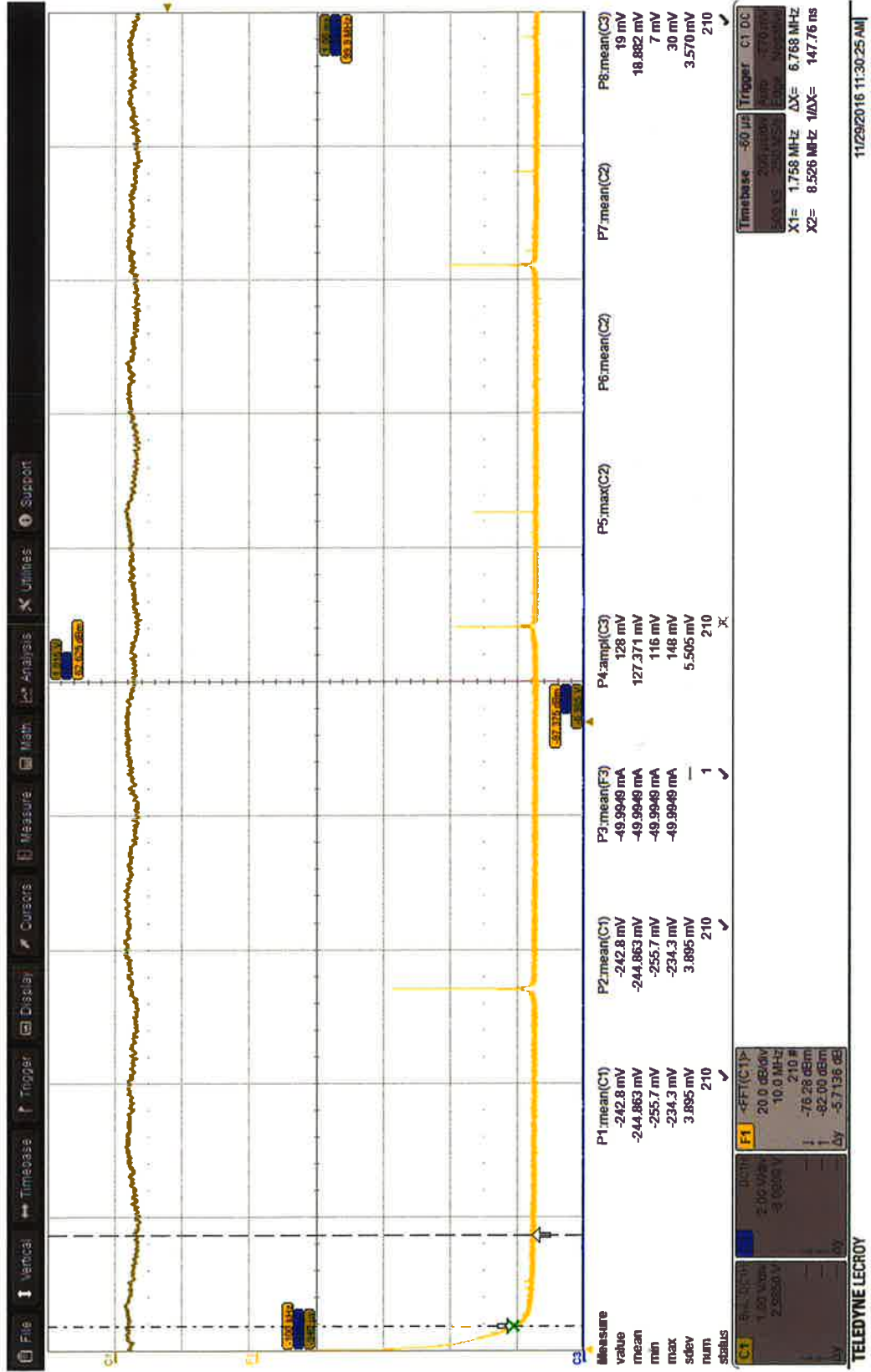
C4 DC

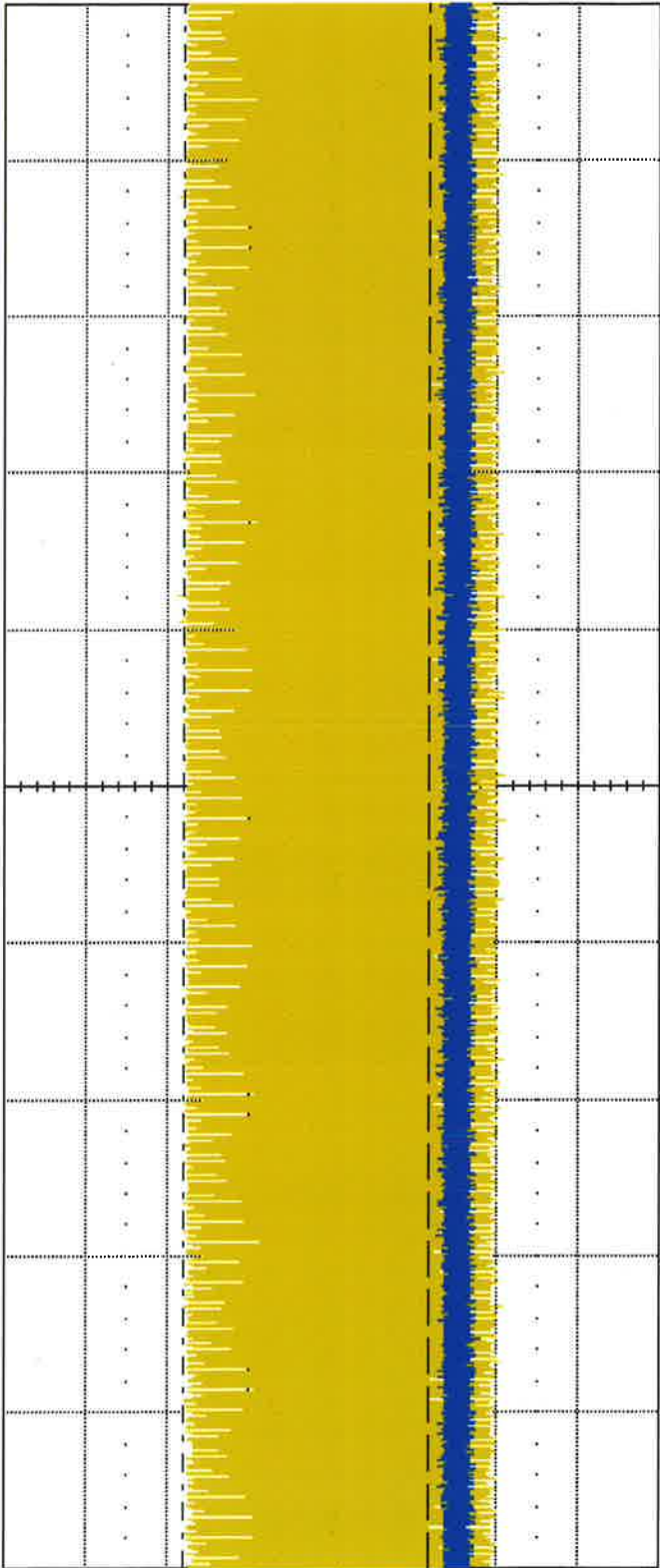
Auto

Edge

1.390 V

Positive





| Measure | | P1:pkpk(C1) | P2:ampl(C1) | P3:ampl(C3) | P4:pkpk(C3) | P5:mean(C3) | P6:--- |
|---------|--|-------------|-------------|-------------|-------------|-------------|--------|
| value | | 3.91 V | 3.550 V | 250 V | 250 V | -1.084 kV | |
| mean | | 3.6094 V | 3.25916 V | 264.9 V | 264.9 V | -1.12529 kV | |
| min | | 3.16 V | 2.796 V | 234 V | 234 V | -1.191 kV | |
| max | | 3.97 V | 3.608 V | 297 V | 297 V | -1.058 kV | |
| sdev | | 263.1 mV | 249.96 mV | 14.5 V | 14.5 V | 37.90 V | |
| num | | 22 | 22 | 22 | 22 | 22 | |
| status | | ✓ | ✓ | ✓ | ✓ | ✓ | |

C1

1.00 V/div

-1.10 mV/div

1.32 V

-1.05 V

-2.98 V

ΔV

C3

500 V/div

320 V offset

585 V

-905 V

-1.490 kV

ΔV

Tbase

-1.54000 ms

40.0 kS

Trigger

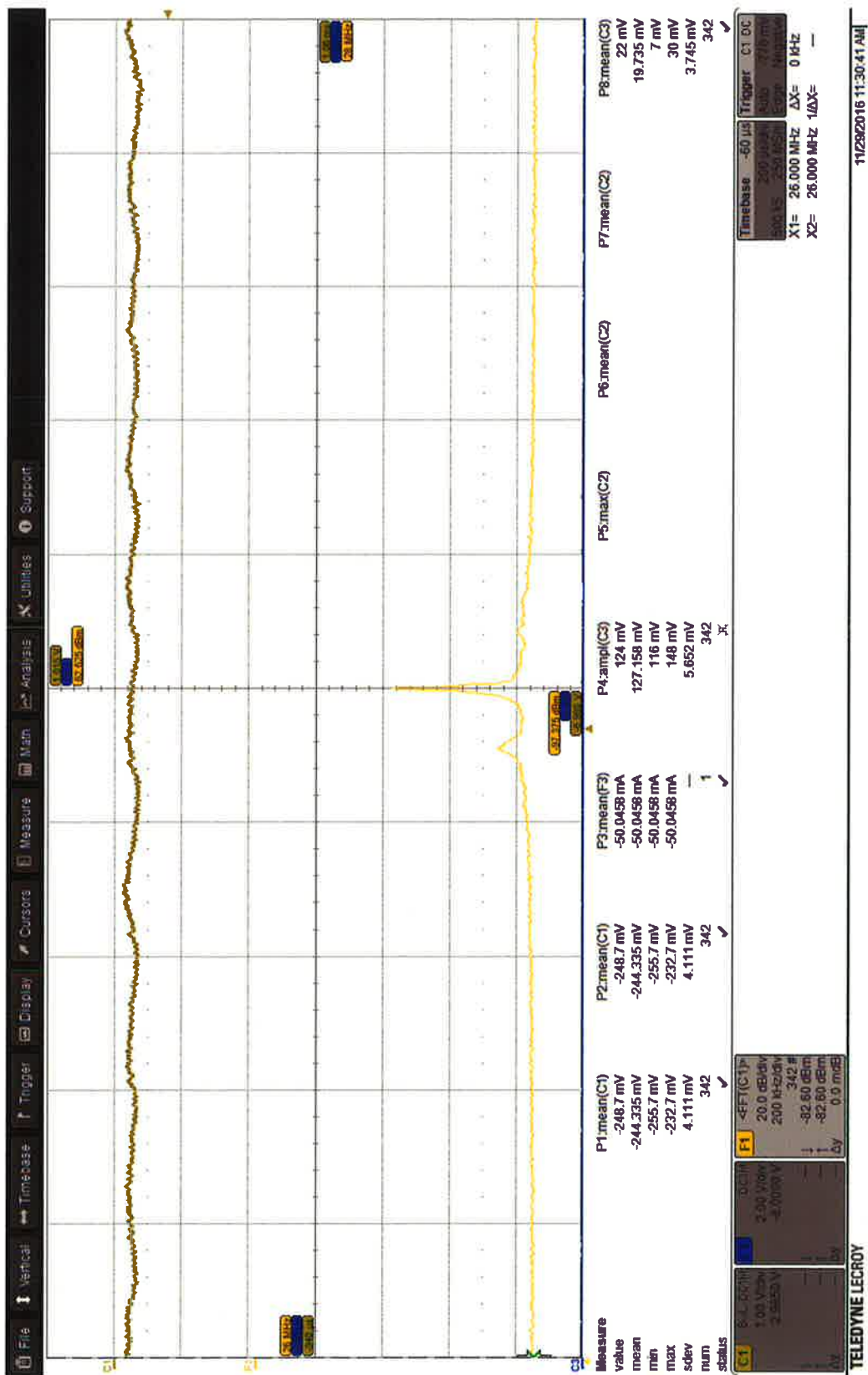
Auto

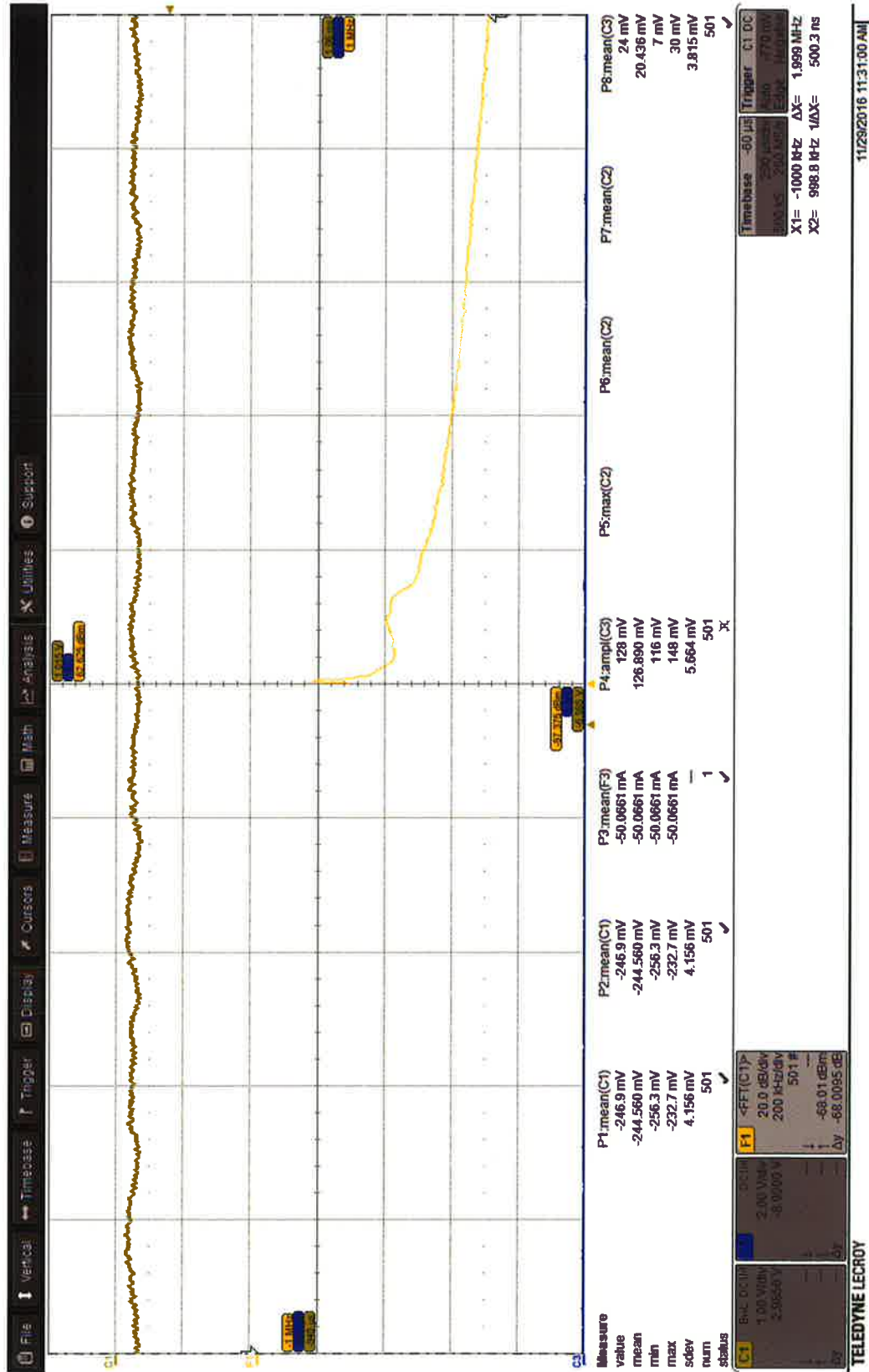
Edge

Positive

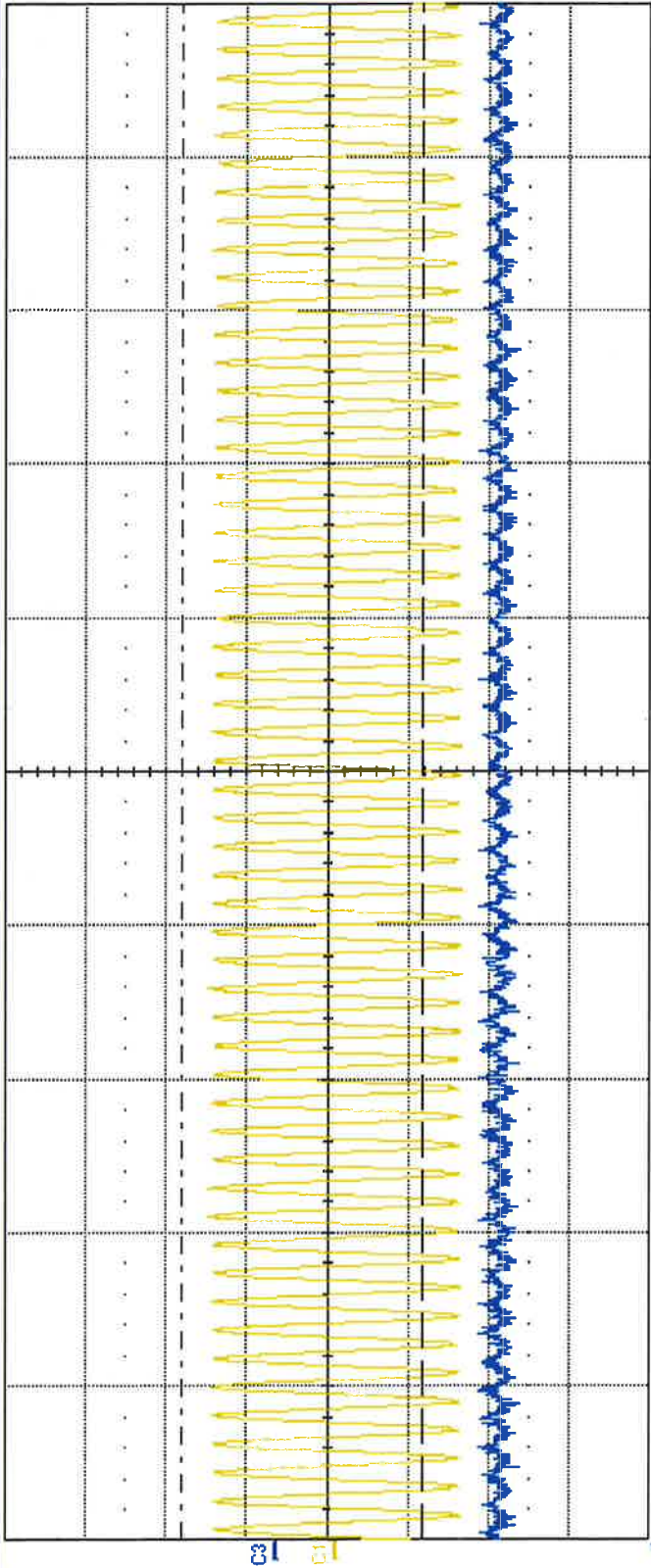
C4

1.390 V









| Measure | | P1:pkpk(C1) | P2:ampl(C1) | P3:ampl(C3) | P4:pkpk(C3) | P5:mean(C3) | P6:--- |
|---------|--|-------------|-------------|-------------|-------------|-------------|--------|
| value | | 3.28 V | 3.030 V | 234 V | 234 V | -1.485 kV | |
| mean | | 3.1139 V | 2.86354 V | 247.2 V | 247.2 V | -1.43123 kV | |
| min | | 2.97 V | 2.653 V | 203 V | 203 V | -1.485 kV | |
| max | | 3.31 V | 3.219 V | 297 V | 297 V | -1.378 kV | |
| sdev | | 74.5 mV | 103.28 mV | 19.9 V | 19.9 V | 24.61 V | |
| num | | 62 | 62 | 62 | 62 | 62 | |
| status | | ✓ | ✓ | .R. | ✓ | ✓ | |

C1

DCIM

1.00 V/div

-4.10 mV offset

1.92 V

-1.06 V

Δy

-2.98 V

C3

DCIM

500 V/div

320 V offset

585 V

-905 V

Δy

-1.490 kV

Tbase

-1.540000 ms

4.00 kS

200 ns/div

2.0 GS/s

Trigger

Auto

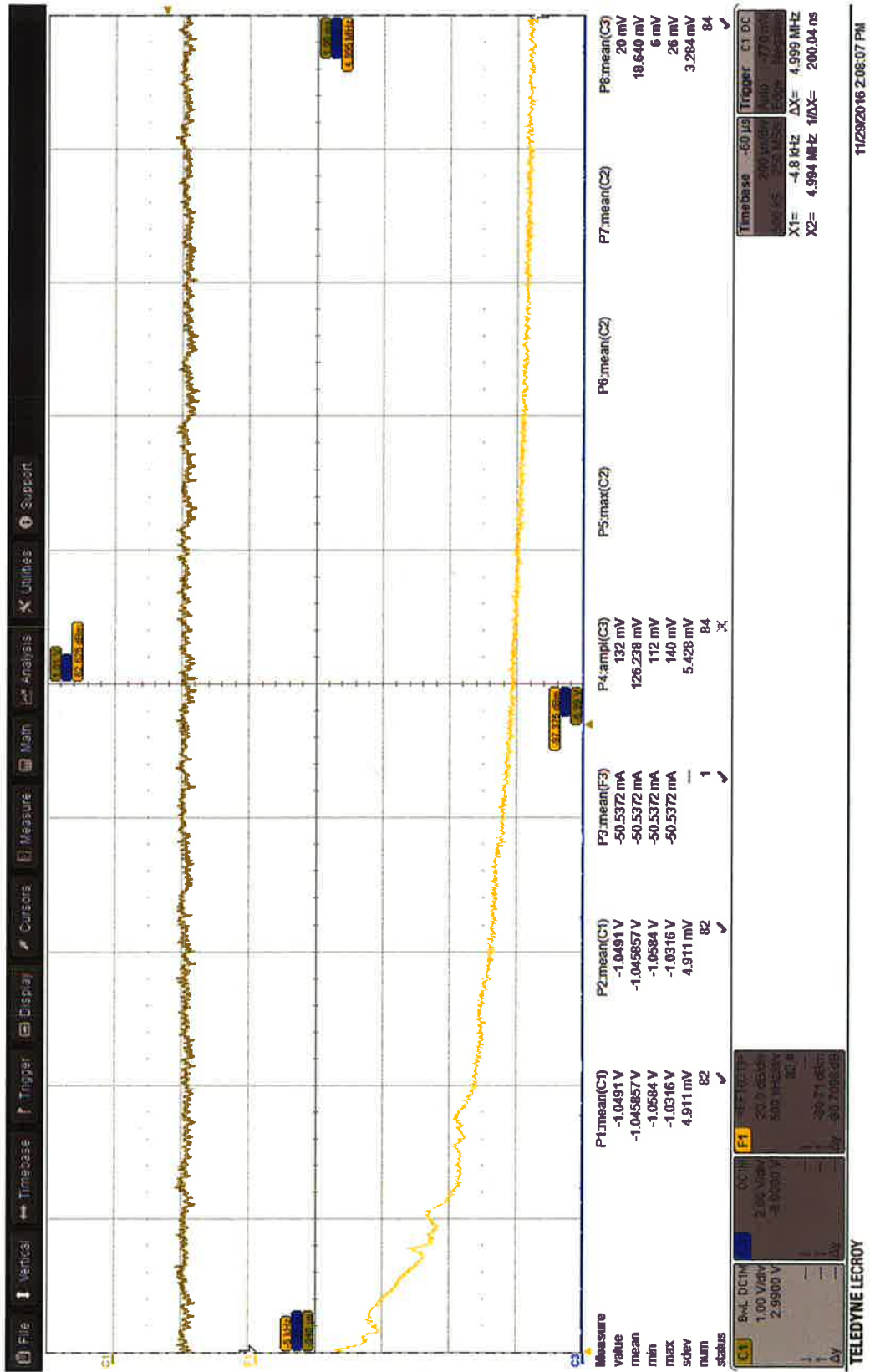
Edge

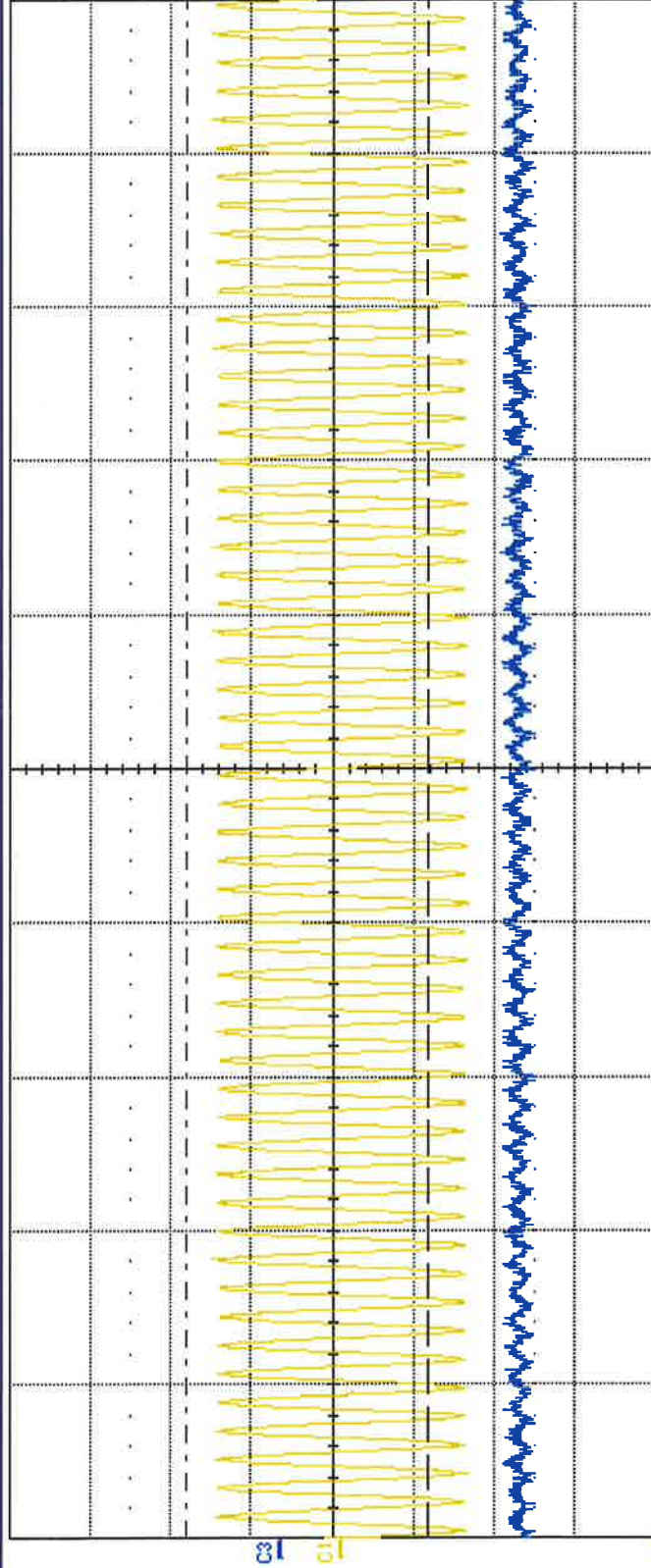
Positive

C4:DC

1.400 V

Positive



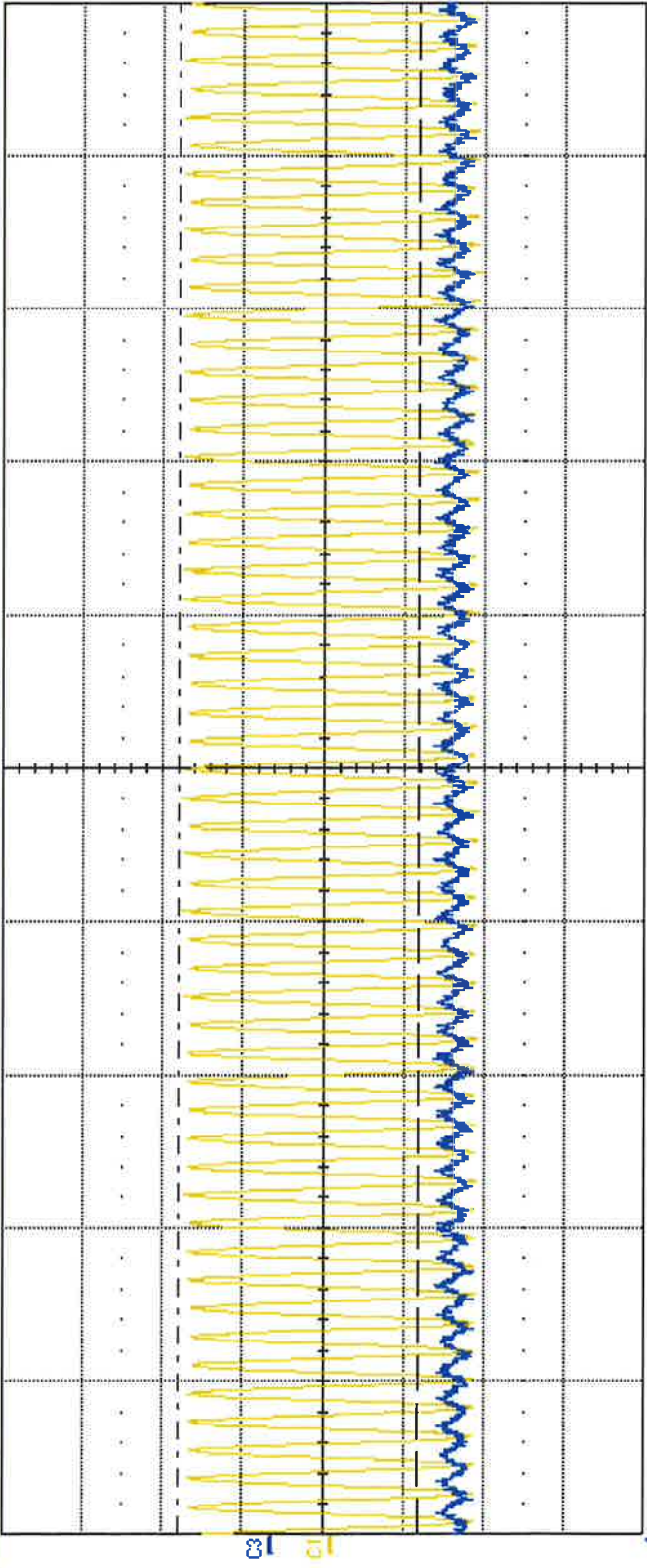


Measure

| | P1:pkpk(C1) | P2:ampk(C1) | P3:ampk(C3) | P4:pkpk(C3) | P5:mean(C3) | P6:--- |
|--------|-------------|-------------|-------------|-------------|-------------|--------|
| value | 3.13 V | 2.926 V | 203 V | 203 V | -1.468 kV | |
| mean | 3.1422 V | 2.87883 V | 213.0 V | 213.0 V | -1.47656 kV | |
| min | 2.94 V | 2.583 V | 188 V | 188 V | -1.502 kV | |
| max | 3.41 V | 3.090 V | 250 V | 250 V | -1.448 kV | |
| sdev | 94.8 mV | 103.34 mV | 16.3 V | 16.3 V | 11.63 V | |
| num | 138 | 138 | 138 | 138 | 138 | |
| status | ✓ | ✓ | IL | ✓ | ✓ | |

| C1 | DCIM | 0013 |
|----------------|--------------|------|
| 1.00 V/div | 500 V/div | |
| -110 mV offset | 320 V offset | |
| 1.92 V | 585 V | |
| -1.05 V | -905 V | |
| Δy | -1.490 kV | |

| Tbase | -1.540000 ms | Trigger | C4:DC |
|---------|--------------|---------|----------|
| 4.00 kS | 200 ns/div | Auto | 1.400 V |
| | 2.0 GS/s | Edge | Positive |



| Measure | P1:pkpk(C1) | P2:ampl(C1) | P3:ampl(C3) | P4:pkpk(C3) | P5:mean(C3) | P6:--- |
|---------|-------------|-------------|-------------|-------------|-------------|--------|
| value | 3.69 V | 3.355 V | 250 V | 250 V | -1.134 kV | |
| mean | 3.5716 V | 3.27304 V | 247.0 V | 247.0 V | -1.14510 kV | |
| min | 3.34 V | 3.056 V | 219 V | 219 V | -1.178 kV | |
| max | 3.78 V | 3.563 V | 297 V | 297 V | -1.110 kV | |
| sdev | 87.8 mV | 88.22 mV | 16.4 V | 16.4 V | 13.84 V | |
| num | 189 | 189 | 189 | 189 | 189 | |
| status | ✓ | ✓ | ✓ | ✓ | ✓ | |

C1
DCIM
1.00 V/div
-110 mV offset
1.92 V
-1.06 V
Δy -2.98 V

C3
DCIM
500 V/div
320 V offset
585 V
-905 V
Δy -1.490 kV

Tbase -1.540000 ms
4.00 kS
200 ns/div
2.0 GS/s

Trigger
C4:DC
Auto
Edge
Positive

